

Linking Rural & Urban Societies & Ecologies

AESS 2013 ANNUAL MEETING



AESS | ASSOCIATION FOR
ENVIRONMENTAL
STUDIES AND SCIENCES

chatham UNIVERSITY



Hosted by
Chatham University
and Duquesne University

Pittsburgh, Pennsylvania
June 19-22, 2013

ded by a shooting / Star's misty dust from interstellar space / Selectively, with slow change and intent / Became ten thousand teeming forms of life / then, by an act of grace / We too arrived - insecure and hell-bent / Clever, ambitious, gritty, full of strife /

The Arts at AESS²⁰¹³:

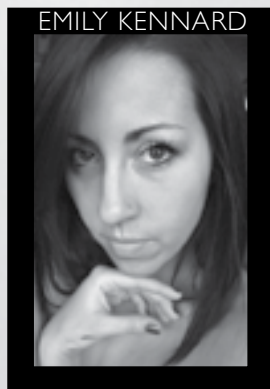
Supporting AESS members to
Inspire, Educate, and Activate
a positive Environmental future!

Explore your lateral thinking skills with writer/
performer Jennifer Joy, at her Wednesday
afternoon workshop, *Using Creative Thinking to
Solve Educational, Activist & Research Challenges*



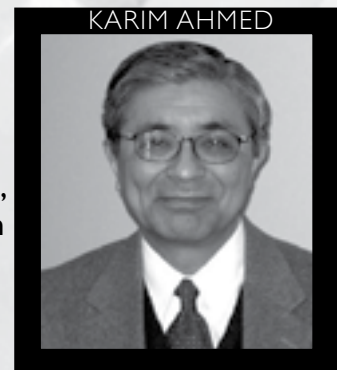
Slowing down and looking within, we see
that everything comes from the same
faceless matter. Dancer Julie Petry's piece,
Faceless Mutations, which will be performed
at the Friday night banquet, reflects the
mutations of our original stomping grounds.

Listening to stories can cultivate empathy and
move us to collective action. Come and
participate in community storyteller Ju-Pong
Lin's Thursday roundtable session where you'll
listen, learn story tools, and tell your own story.



We can all cut ourselves off from the natural
world. Still, it continues to call, it continues
to entrance us... as it does in dancer Emily
Kennard's piece, *Can I Conquer You*, to be
performed at the Friday night banquet.

Enjoy poetry at the receptions by Karim Ahmed,
NCSE Board Member and Director of International Program



Stop by the coffee cart during breaks...
You never know when ART might just happen!

Bios of artists on AESS 2013 Flash drive

Designed by Paige Ware

Let's recapture that time of innocence / (ignore the serpent, that first apple's bite) poem excerpt from Ode to Spring by Karim Ahmed



2013 ANNUAL MEETING June 19-22

HOSTED BY CHATHAM UNIVERSITY AND DUQUESNE UNIVERSITY • PITTSBURGH, PENNSYLVANIA

AESS Mission

Association for Environmental Studies and Sciences (AESS) is an independent faculty-and-student-based professional association in higher education, designed to serve the needs of environmental scholars and scientists who value interdisciplinary approaches to research, teaching, and problem-solving. Founded in 2008, the Association seeks to provide its members with the latest environmental information and tools to create better courses, strengthen research, develop more satisfying careers, harness the power of a collective voice for the profession, and enjoy each other's company at national and regional meetings.

A major aim of AESS is to encourage interdisciplinary understanding of environmental science, policy, management, ethics, history, and all of the other vital contributions of traditional disciplines. From its beginning, the Association has been envisioned as a community of environmental scholars and scientists, not a confederation of disciplines. Fundamental to its members' embrace of higher education is the notion that broad advances in environmental knowledge require disciplinary, interdisciplinary, and transdisciplinary approaches to research and learning.

Table of Contents

Conference Welcomes	2
Conference Overview	4
Keynote Speakers	5
Acknowledgements/Sponsors	6
Session Types	7
Conference Exhibitors	7
Program Schedule	
Sessions Overview	8
Wednesday, 19 June Workshops	10
Thursday, 20 June Events	15
Friday, 21 June Events	22
Saturday, 22 June Events	29
Presenter Index	44
AESS @ Duquesne Notes	48
Campus Map	Inside Back Cover

Association for Environmental Studies and Sciences

1101 17th Street, NW Suite #250

Washington, DC 20036

Phone 202.207.0014

Fax 202.628.4311

E-mail lbirkey@ncseonline.org

President	Phil Camill
President-elect	Wil Burns
Secretary	Mike Finewood
Treasurer	Gregory Mohr
Communications	Lyle Birkey

WELCOME



President

Welcome to the 2013 AESS Annual Meeting “Linking Rural and Urban Societies and Ecologies.” Focusing on rural and urban systems is critical for understanding many contemporary environmental challenges, including energy, water, food, land use, and waste management, among others. Our theme also provides an important lens for exploring how rural and urban contexts shape how environmental issues arise, are conceptualized, and addressed. We are grateful to be able to take advantage of what Pittsburgh and surrounding regions have to offer; this is an outstanding setting for these kinds of ongoing debates and conversations.

We have a provocative and engaging conference in store for you. Showcasing the talents of a diverse membership from the humanities, social sciences, and natural sciences, the program includes keynote addresses, presentation and discussion sessions, workshops, roundtable discussions, and field trips, along with awards, evening events, and lots of opportunities for informal conversation and collaboration. This year we have worked hard to infuse the arts throughout the program in ways that we hope you will find interesting and entertaining.

There are many who deserve thanks and praise for their terrific work behind the scenes to make this conference a success. I want to thank Duquesne University and Chatham University as the co-hosts of this year’s conference, especially the local site planning team under the terrific leadership of Jess Mooney, Mike Finewood, Dave Hassenzahl, and Dave Siebert. This year’s program was developed by a team of talented individuals on the Program Committee, who were guided by an outstanding program chair, Nancy Rich. Many thanks to Rod Parnell, Kim Smith, and the Awards Committee for organizing the award process. Lyle Birkey (AESS/NCSE) and the UVM conference registration team have worked tirelessly behind the scenes to ensure smooth operation of the technical aspects of the conference. I thank David Blockstein and NCSE for their continued support of AESS, as well as the AESS Board of Directors for assistance with strategic planning. There are a number of major financial sponsors whose generous support helped make this year’s conference program possible, and you will see these folks listed and mentioned throughout the program. AESS is grateful for your support.

It’s been a pleasure and an honor to serve as your president for the past two years. AESS is a successful and thriving organization thanks to the commitment and creativity of its diverse membership. I hope that during these next few days you are able to rekindle old friendships and develop new interdisciplinary collaborations—after all, that’s what makes the AESS community one-of-a-kind. And please continue to stay engaged, recruit colleagues and students to AESS, and send your best work to the *Journal of Environmental Studies and Sciences*. On behalf of the AESS Board of Directors, welcome to Pittsburgh. Enjoy the conference!

Phil Camill, AESS President



Site Host

Welcome to Pittsburgh! Chatham University and Duquesne University are thrilled to co-host the AESS 2013 Conference. Pittsburgh provides a perfect backdrop to feature this year's theme, 'Linking Rural & Urban Societies &

Ecologies.' Pittsburgh's rich industrial history and environmental legacy have shaped what Pittsburgh is today.

Consider signing up for one of our fieldtrips and exploring some of what Pittsburgh has to offer. Visit Chatham University's Eden Hall Campus, a self-sustaining living laboratory located on a 388 acre farm just north of Pittsburgh, or take a tour of the state of the art co-generation plant on Duquesne's campus that produces 85% of the University's power. We have many other trips planned with local organizations who are making a difference on a daily basis to improve water quality, restore natural streams, build community through urban gardens, and much more. Pittsburgh is a healthier, greener, and more vibrant city because of the work of our non-profit community and universities. I hope you have an opportunity to meet new people, share good food, learn something, and see a little of Pittsburgh!!

Jessica Mooney, AESS 2013 Host



Program Chair

Welcome to the AESS 2013 Conference! At this year's conference you will find a notable depth and breadth of research, teaching, and practice in Environmental Studies and Sciences. A number of topics run across several different sessions,

beginning with presentations and culminating in discussions on how to move these insights into practice in and through AESS. You will see many sessions directly addressing the conference theme, pointing to the critical role of acknowledging urban and rural linkages in addressing environmental issues. Many sessions also address important environmental justice issues.

AESS is a place to explore how we can enrich the interdisciplinary nature of environmental studies and sciences and make these cross-fertilizations effective. The conference offers five types of sessions: workshops, discussion symposia (which emphasize discussion over

presentation), presentation panels (which emphasize presentation over discussion), mealtime roundtables (free-ranging dialogues held during breakfasts and lunches), and a poster session. Art performances enliven the conference during breaks and sessions as we experiment with ways of integrating the arts in ESS. In addition, mid-conference field trips provide a refreshing break and a look at local programs, places, and practices in and near Pittsburgh. Following on last year's keynote experience, we are once again offering a provocative opening experience with two keynote speakers.

We continue to explore how AESS and its conferences can help address and be of interest to the concerns of diverse communities. Please help by giving us ideas and feedback, informally and in the online post-conference evaluation form. Enjoy!

Nancy Rich, AESS 2013 Program Chair on behalf of the AESS 2013 Program Committee (Mary Collins, Aileen Guzman, Mercedes Quesada-Embid, Kim Smith)



Arts Committee

Welcome to the 2013 AESS Conference from the Arts Committee! This year, the arts committee and I are striving to integrate the arts into the overall experience of conference, so that AESS members can see how the arts can

support and become integrated into their own work. Expect to hear Karim Ahmed's poetry at receptions, enjoy story-telling with Ju Pong Lin at Thursday's noon roundtable, and get ready to enjoy amazing dance performances from Emily Kennard and Julie Petry during the banquet. There may also be a few other surprises!

The arts committee and I believe there is something of tremendous value in the arts for AESS members. The arts can: break down barriers to learning and to change; make immediate and visceral connections between audience and subject; help trigger transformation at a time when transformation is sorely needed; and help audiences see possibilities and imagine options they maybe have not been able to consider before.

We're hoping some of these things happen for many of you this year, and that you leave with ideas of how to integrate the arts into your own ESS programs.

Jennifer Joy, AESS 2013 Arts Committee Chair

CONFERENCE OVERVIEW

Wednesday, June 19	
7:30 a.m.	Breakfast
9:00-12 noon	Morning Workshops
12 noon	Lunch
1:00-4:00 p.m.	Afternoon Workshops
5:00-7:00 p.m.	Opening Reception and Welcome
7:30 p.m.	Opening Keynote Panel
Thursday, June 20	
7:30 a.m.	Breakfast & Roundtable Discussions
7:30 a.m.	Meeting of The Journal for Environmental Studies and Sciences Editorial Board
8:00-10:00 a.m.	Exhibitors set up
9:00-10:30 a.m.	Session A: Plenary Presentation
10:00 a.m.-6:00 p.m.	Exhibition is open
10:30 a.m.	Coffee Break
11:00 a.m.-12:30 p.m.	Session B
12:30-2:00 p.m.	Lunch & Roundtable Discussions
2:00-3:30 p.m.	Session C
3:30 p.m.	Coffee & Snack Break
4:00-5:30 p.m.	Session D
5:45 p.m.	AESS Reception & Business Meeting (all AESS members invited)
7:00 p.m.	Dinner on your own
Friday, June 21	
7:30 a.m.	Breakfast & Roundtable Discussions
7:30 a.m.	JESS/AESS Board Meetings
9:00-10:30 a.m.	Session E and Presentation by Student Award Finalists
10:30 a.m.	Coffee Break
11:00 a.m.-12:30 p.m.	Session F
12:30 p.m.	Lunch
1:00-5:30 p.m.	Field Trips
5:30-7:30 p.m.	Exhibitions open (pack up by 10:00 p.m.)
6:00-7:30 p.m.	Poster Session (set up at 5:30 p.m.)
7:30 p.m.	Banquet
Saturday, June 22	
7:30 a.m.	Breakfast
7:30 a.m.	AESS Council Meeting (Council Members only)
9:00-10:30 a.m.	Session G
10:30 a.m.	Coffee & Snack Break
11:00 a.m.-12:30 p.m.	Session H
12:30 p.m.	Lunch & Closing Keynote Address
2:00-3:30 p.m.	Session J
3:30 p.m.	Travel Snacks, End of Conference

KEYNOTE SPEAKERS

JOEL A. TARR

Richard S. Caliguiri University Professor of History and Policy, Carnegie Mellon University

Devastation and Renewal: Perspectives on the Environmental History of Pittsburgh



Joel A. Tarr is the Richard S. Caliguiri University Professor of History and Policy at Carnegie Mellon University. His main research interests are in the history of the urban environment and urban infrastructure systems. He is the author of *The Search for the Ultimate Sink: Urban Pollution*

in Historical Perspective (1996), *The Horse in the City: Living Machines in the 19th Century* (2007), the editor of *Devastation and Renewal: An Environmental History of Pittsburgh and Its Region* (2004), and, with Gabriel Dupuy, *The Rise of the Networked City in Europe and America* (1988). His articles and papers on the urban environment and urban technologies have appeared in numerous journals and edited volumes. He is the recipient of Carnegie Mellon University's 1992 Robert Doherty Prize for "substantial and sustained contributions to excellence in education" and of the 2008 Leonardo da Vinci Medal of the Society of the History of Technology awarded for outstanding contributions to the field.

PAUL MOHAI

School of Natural Resources and Environment, and Institute for Social Research, University of Michigan

Urban Environments, Environmental Justice, and Children



Paul Mohai is a Professor in the School of Natural Resources and Environment and a Faculty Associate at the Institute for Social Research at the University of Michigan, Ann Arbor, where he teaches courses on Environmental Justice, Environmental Policy, and Environmental Public Opinion.

He was an early and major contributor to the growing body of quantitative research examining the disproportionate environmental burdens in low income and people of color communities. A significant outcome of this early research was the organization of the historic 1990 "Michigan Conference on Race and the Incidence of Environmental Hazards" with colleague Dr. Bunyan Bryant. Professor Mohai also served

on the National Advisory Committee to the First National People of Color Environmental Leadership Summit, and was a member in the early 1990s of the "Michigan Coalition" that advised the U.S. EPA on environmental justice policy. He is currently a member of EPA's National Environmental Justice Advisory Council (NEJAC). His current research involves national level studies examining the causes of environmental disparities and the role environmental factors play in accounting for racial and socioeconomic disparities in health. He is also examining pollution burdens around public schools and the links between such burdens and student performance and health. He is the author or co-author of numerous publications on the subject of race and the environment.

CAMILLE PANNU

Sustainable Economies Law Center, Oakland, CA

Bridging Communities Through Environmental Practice: Integrating the Urban and Rural



Camille is an Equal Justice Works Fellow and Staff Attorney (sponsored by Hewlett-Packard and Morgan, Lewis & Bockius LLP) at the Sustainable Economies Law Center. Based in California's rural San Joaquin Valley, she partners with rural and farm worker communities to create community-

driven and community-owned projects that improve health, build residents' power, and support sustainable local economic development. Prior to joining the Sustainable Economies Law Center, she co-coordinated the Center on Race, Poverty & the Environment's campaign for Green and Just Economic Development.

Raised in Richmond, California, Camille graduated from UC Berkeley School of Law (Boalt Hall), where she developed programs and university-community partnerships to address persistent environmental inequality in California's low-income communities of color. She has received recognition by the University of California, American Bar Association, California Bar, and minority bar associations, for her work with rural communities of color. In addition to her work with Valley communities, Camille serves on the boards of, and advises, several local and statewide community organizations focused on economic, environmental, and food justice.

ACKNOWLEDGEMENTS

SPONSORS

Platinum (\$3,000)

Bayer School of Natural and Environmental Science/CERE,
Duquesne University
School of Sustainability and the Environment, Chatham University
University of Vermont

Silver (\$750)

Bullfrog Films
Center for Bioethics: Life, Health & Environment, New York University
Hassenzahl Family
Master of Sustainability, Chatham University
Springer

Bronze (\$300)

John Wiley & Sons Inc.
Ursinus College

The 2013 AESS conference was made possible by the hard work of many staff and volunteers. Special thanks to:

Duquesne/Chatham Program Team

Jessica Mooney, site chair
Michael Finewood
David Hassenzahl
Gina Mucciolo
Kate Nagle-Caraluzzo

AESS Officers and Committee Chairs

Nancy Rich, *program chair*
Phil Camill, *AESS president*
Lyle Birkey, *AESS administrative assistant*
Rod Parnell, *awards committee chair*
Leslie Gray, *2012 conference host*
Ken Wilkening, *2012 program chair*
Jennifer Joy Pawlitschek and performance artists

AESS 2013 Program Committee Members

Nancy Rich, *Chair*
Mary Collins, *University of California, Santa Barbara*
Aileen Guzman, *Ateneo de Manila University & AGES LLC*
Mercedes Quesada-Embid, *Colorado Mountain College*
Kim Smith, *Carleton College*

Keynote Speakers

Joel A. Tarr
Paul Mohai
Camille Pannu

Plenary Speaker

Shirley Vincent

David Blockstein and NCSE for their support of AESS

Conference and Event Services

Megan Reterson, Duquesne University
Karen White, Duquesen University

Program Book Design

Krista Terpack, Chatham University

SESSION TYPES

Note: Sessions are presentation panels unless otherwise indicated.

Workshops

Workshops are interactive (as opposed to lecture-based) and have a formal educational or professional development component. Content may include presentations, discussions, exercises, formal training, or other methods of promoting heuristic goals. Workshops are expected to have clear goals and outcomes.

Discussion Symposia

Discussion symposia are designed for focused discussion on a selected topic. Playing off the original ancient Greek symposia, the emphasis is on in-depth intellectual exchange. Opening remarks are appropriate but it is not expected that participants will deliver a formal presentation.

Presentation Panels

Presentation panels are designed for presentation of research or other scholarly AEES-related endeavors. In generation, they consist of four presenters who are each allotted approximately 20 minutes to speak, followed by questions and answers or discussion.

Mealtimes Roundtables

Mealtimes roundtables are designed to foster open discussion around a topic of general and collective interest to the AEES community. Anyone can join a roundtable. Roundtables are scheduled during mealtimes, either breakfast or lunch, at the designated conference dining location, where they will have a table set aside. They are led by the coordinator listed in the program book.

EXHIBITOR LIST

Thanks to the following exhibitors for providing exhibit space at the conference:

Bard Center for Environmental Policy

Bayer School of Natural and Environmental Science/CERE, Duquesne University

Bullfrog Films

DIS – Danish Institute for Study Abroad

John Wiley & Sons Inc.

School of Sustainability and the Environment, Chatham University

Springer

University of Vermont

West Academic Publishing

Women of the Cloud Forest

W.W. Norton & Company

Yale School of Forestry and Environmental Studies

SESSIONS OVERVIEW

Thursday

	A (9:00-10:30)	B (11:00 a.m.-12:30 p.m.)	C (2:00-3:30 p.m.)	D (4:00-5:30)
1	The State of Environmental Studies and Sciences (plenary) Power Center	Learning Here and There: Study Abroad College Hall, Room 222	Gender Issues and Dynamics in ESS College Hall, Room 222	Teaching Environmental (Public) Health in an ESS Context College Hall, Room 222
2		Rural / Urban Dimensions of Renewable Energy Conflicts College Hall, Room 225	Student Organic Gardens: Case Studies from Across the US College Hall, Room 225	Living in a Fracked World: Differential Effects of Shale Gas Development College Hall, Room 225
3		The Role of Marginalized Peoples in Sustainability Solutions College Hall, Room 346	Imagined Communities: Linking Rural and Urban Environmentalisms College Hall, Room 351	Environmental Studies and International/Global Studies College Hall, Room 346
4		Fracking: Controversy, Communication and Consequences, Part I College Hall, Room 351	Psychological Distance and Motivating Action on Environmental Issues Canevin Hall, Room 201	Pittsburgh Milestones on the Path to a Sustainable Future College Hall, Room 351
5		Flows of Waste, Part I: Organic Waste Canevin Hall, Room 201	Interdisciplinary Challenges in Environmental Public Health, Part 2 Canevin Hall, Room 204	Food and Urban Environments Canevin Hall, Room 201
6		Interdisciplinary Challenges in Environmental Public Health, Part I Canevin Hall, Room 204	ESS Pedagogy: Service Learning Canevin Hall, Room 306	Contested Countryside: Understanding Land-use Conflicts Canevin Hall, Room 204
7		American Food Security: Improving the Resilience of Our Food Supply, Part I Canevin Hall, Room 306	Forests and Climate Change Canevin Hall, Room 313	New Gender Directions for Environmental Research Canevin Hall, Room 306
8		Case Studies from Developing Countries, Part I Canevin Hall, Room 313	Urban Sustainability: Water and Power Infrastructure Canevin Hall, Room 314	Technologies: Risk, Trust, and Citizen Participation Canevin Hall, Room 313
9				

Friday

	E (9:00-10:30)	F (11:00-12:30)
1	Flows of Waste, Part 2: eWaste and Heavy Metal College Hall, Room 222	American Food Security: Improving the Resilience of Our Food Supply, Part 2 College Hall, Room 222
2	Energy Poverty, Disruption and Scarcity, Part 1 College Hall, Room 225	Pollution Analysis in Urban and Rural Settings College Hall, Room 225
3	A Tale of Two Watersheds: Balancing Urban and Rural Water Interests College Hall, Room 346	Flows of Waste, Part 3: Solid Waste Management College Hall, Room 346
4	Agriculture, Water Quality and Climate Change College Hall, Room 351	Integral Ecologies: Integrat- ing Mind, Heart, Body and Spirit College Hall, Room 351
5	Assessing Sustainability Education Canevin Hall, Rm 201	Interdisciplinary Environ- mental Program Team USA Canevin Hall, Rm 201
6	Presentations by Student Award Finalists Canevin Hall, Rm 313	Energy Poverty, Disruption and Scarcity, Part 2 Canevin Hall, Rm 204
7		Globalization, Market Forces and Environment in Developing Countries Canevin Hall, Rm 306
8		Watersheds and Governance Canevin Hall, Rm 313
9		Telling the Story: Opportunities for Communicating the Environment Canevin Hall, Rm 314

Saturday

G (9:00-10:30)	H (11:00-12:30)	J (2:00-3:30)
Educating Undergraduates to Navigate Facts and Values College Hall, Room 220	The Future of Environmental Regulation College Hall, Room 220	Linking Rural and Urban Societies through Sustainability Strategies and the Public Plate College Hall, Room 220
American Food Security: Improving the Resilience of Our Food Supply, Part 3 College Hall, Room 222	Bioenergy Policy & Transfor- mation to a Green Economy: Conceptualizing & Operation- alizing Sustainability Metrics College Hall, Room 222	Beyond the UNFCCC: Regional, National and Sub-National Market-Based Systems College Hall, Room 222
Fracking: Controversy, Communications and Consequences, Part 2 College Hall, Room 223	SCA Youth & Young Adults Leading Urban & Rural Sustainability College Hall, Room 223	The Psychology of Climate Change College Hall, Room 223
Alternative Pathways to Environmental Policy Change College Hall, Room 225	Cultivating Ecological Consciousness College Hall, Room 225	Integrating Geoscience into Sustainability College Hall, Room 225
Building Green: Towards More Sustainable Built Environments College Hall, Room 346	Public Participation: A Closer Look College Hall, Room 346	Trails, Trout, and Tourism: Recreational Values and “Wild” Spaces College Hall, Room 346
Contemplative Pedagogy and the Lama Experience College Hall, Room 351	Visions of an Integrated Human/Nature Relationship College Hall, Room 351	Operationalizing Stewardship for Land and Water Protection College Hall, Room 351
Disaster by Design: Lessons of the Aral Sea for Sustain- ability (Part 1) Mellon Hall, Maurice Lecture Hall	Environmental Justice: Indigenous Peoples and Local Peoples College Hall, Room 447	ESS Pedagogy: Bridging between Urban and Rural Cultures College Hall, Room 447
Politics of Climate Change College Hall, Room 548	Exploring Environmental Issues through Literature and the Arts College Hall, Room 548	Energy Behaviors in the Built Environment College Hall, Room 548
“Interdisciplinary”— A Concept in Search of Guidelines and Practicality College Hall, Room 553	The Lessons of the Aral Sea Disaster: A photographic journey through loss and sad beauty (Part 2) Mellon Hall, Maurice Lecture Hall	Education for Sustainability College Hall, Room 553

Wednesday, 19 June

Morning Workshops

9:00 a.m.-Noon

W-4 Teaching Interdisciplinary Inquiry

College Hall, Room 222

Coordinators

- Claire Todd, Pacific Lutheran University, toddce@plu.edu
- Rose McKenney, Pacific Lutheran University, mckennra@plu.edu

Workshop Description

In the Environmental Studies program at Pacific Lutheran University, a team of discipline-based faculty “educate to engage actively and critically the complex relationships between people and the environment, drawing upon integrated and interdisciplinary perspectives.” When we ask students to integrate disciplines, we find that students are sometimes unaware that integration is more than merely alternating between disciplines. Over the past couple of years, we have developed approaches to teaching and learning that help students integrate and analyze issues from interdisciplinary perspectives, drawing upon discipline-specific ways of inquiry. This workshop will share these approaches and provide opportunities for participants to consider applications in their own interdisciplinary programs. We encourage participants with any level of experience in interdisciplinary pedagogy, including no experience, to join us.

About the Facilitators

- Claire Todd, Pacific Lutheran University, toddce@plu.edu
Dr. Todd is an assistant professor of Environmental Studies and Geosciences at Pacific Lutheran University (PLU). She has been involved in interdisciplinary programs at PLU since fall 2007, including Environmental Studies and the International Honors program.
- Rose McKenney, Pacific Lutheran University, mckennra@plu.edu
Dr. McKenney is an associate professor of Environmental Studies and Geosciences at Pacific Lutheran University (PLU). For ten years, she has taught the interdisciplinary environmental methods course, and interdisciplinary environmental studies capstone course (See McKenney et al., 2011) at PLU.

Afternoon Workshops

1:00-4:00 p.m.

W-3 Getting Published: Preparing Manuscripts for Journal Submission

College Hall, Room 225

Coordinators

- Walter (Tony) Rosenbaum, University of Florida, Tonyros@ufl.edu
- Kim Smith, Carleton College, ksmith@carleton.edu

Workshop Description

This will repeat a workshop held at the last two conferences. It is intended for graduate students and young professional desiring on opportunity prepare articles and have manuscripts reviewed as they would for submission the *Journal for Environmental Studies and Sciences*, or other professional publication. How the workshop will be organized:

- Each prospective participant will be asked to submit a draft manuscript at least a month to six weeks in advance of the workshop.
- The manuscripts will be reviewed by the workshop organizer(s) and those submissions in satisfactory preparation will each be read by the workshop organizer(s) and at least two other workshop participants (the organizer(s) will divided the manuscripts among the participants. so that each participant will have no more than two articles to review).
- Before the session, the participants will be divided into small groups, each consisting of 2-4 workshop participants and a Journal editor or otherwise qualified reviewer. Each small group participant's submission will be read by the other group members in advance of the meeting.

One purpose of the workshop is to identify and encourage prospective submissions to JESS. Additionally, the workshop should help the participants to anticipate issues commonly associated with journal article reviews and to prepare their manuscripts with greater professional skill. Several editors from JESS will also participate. Grad students and young professionals will be recruited as participants from the AESS listserv.

W-5 Interdisciplinary Resources for Social Science Environmental Health Research

College Hall, Room 346

Coordinators

- Christine Vatovec, University of Vermont, cvatovec@uvm.edu
- Robin Dodson, Silent Spring Institute, dodson@silentspring.org

Workshop Description

Scholars and government agencies alike are increasingly recognizing that effective environmental health research requires a balance of technical and social expertise to strengthen our understanding of the causes, consequences, and approaches to solving environmental health challenges. This workshop will 1) provide tools and resources to participants interested in strengthening their environmental health research, and 2) identify what further information and resources participants need to effectively carry out Social Science Environmental Health Research (SSEHR). This workshop will provide strong footing for a publicly-available online education tool being developed by the Social Science Environmental Health Research Institute, directed by Phil Brown at Northeastern University.

Over the course of this workshop, participants will:

- Increase their understanding of how collaborative, interdisciplinary research approaches can strengthen their environmental health research.
- Identify basic scientific concepts that will enhance their SSEH research.
- Improve their understanding of the SSEHR process.
- Identify networking resources for interdisciplinary SSEHR collaborations.
- Identify what further information and resources they need to be able to effectively carry out SSEHR. The results of this discussion will lead to the development of further materials that will be made available via the SSEHRI website and YouTube channel.

About the Facilitators

Christine Vatovec is a postdoctoral research associate at the University of Vermont's College of Medicine, and a member of the Social Science Environmental Health Research Institute under the direction of Phil Brown at Northeastern University.

Robin Dodson is a research scientist at the Silent Spring Institute with expertise in exposure assessment and indoor air pollution. She is currently working on developing innovative exposure assessment methods for cohort studies and intervention studies aimed at reducing indoor pollution.

W-7 Using Creative Thinking to Solve Educational, Activist and Research Challenges

College Hall, Room 552

Facilitator

- Jennifer Joy Pawlitschek, Independent Artist and Activist jjoy@jenniferjoyonline.com

Workshop Description

AESS members are researchers, activists and educators. Challenges are rife in each of these areas. Solutions based on convergent thinking – thinking that follows a logical step-by-step process to a single solution – do not always address the complexity of these problems. Creative (divergent) thinking, which follows a spontaneous and free-flowing process, can generate fresh and previously unimagined solutions. In order to address the complex challenges of AESS members, this workshop will apply creative thinking skills and exercises to help participants find innovative solutions.

Participants will:

- Increase their creative thinking and problem solving skills
- Learn and experience how creative thinking can impact their intellectual performance
- Use repeatable exercises to further develop their creative thinking skills after the workshop
- Use a repeatable creative problem solving process for finding innovative solutions to other challenges
- Solve at least one challenge from their teaching, activism and/or research

About the Facilitator

Jennifer Joy Pawlitschek is a writer/performer and trainer. She uses creative processes both in her daily practice as an artist, and in her teaching. Interdisciplinarity is a key part of her practice, both as an artist using science in her writing/performance and as a trainer working with academic and corporate clients.

W-8 Assessment and Evaluation of Interdisciplinary Environmental Programs

College Hall, Room 548

Facilitator

- Antje M. F. Danielson, Tufts Institute of the Environment, Tufts University; President-elect, Council of Environmental Deans and Directors (CEDD); Antje.Danielson@tufts.edu

Workshop description

Demand for program evaluation has grown dramatically, with significant resources now devoted to it. Evaluations provide feedback for program improvement, and help determine benefits from new and veteran programs. Clear articulation of the program's mission and the related objectives and expected outcomes is critical. Correlation with the perceptions of accreditation and funding agencies can be crucial to the program's success. The Council for Environmental Deans and Directors (CEDD) works to strengthen the administration of interdisciplinary environmental programs. This workshop is intended to communicate expertise and information about evaluation and assessment and share cases of best practices amongst program administrators and educators. Programs are evaluated on different levels. The easiest and least controversial level is linked to the business of running the program in a successful, efficient, and sustainable way. The workshop will introduce indicators and tools for this level of evaluation.

Programmatic assessment of interdisciplinary environmental and sustainability programs is much trickier and currently a hot topic of discussion amongst program administrators and educators. The workshop will introduce current thinking behind programmatic assessment of interdisciplinarity and share insights from CEDD surveys and CEDD members. We will look at conceptual frameworks for program design and as basis for future evaluation and benchmarking. We will use the latest findings on interdisciplinary research and teaching from the learning sciences, and the collective experience of the participants. Participants will gain an understanding of potentially useful steps, to lead in-depth evaluation of interdisciplinary environmental programs and tools for evaluating success and assessing programmatic effectiveness. We will address the cycle of connecting assessment research to programmatic practice thereby improving programs in an iterative fashion.

W-9 Integrating Risk with Environmental Science

College Hall, Room 553

Facilitators

- Tee Guidotti, Councilor, National Capital Area Chapter, Society for Risk Analysis, tee.guidotti@gmail.com
- Sally Kane, President, National Capital Area Chapter, Society for Risk Analysis, smkane55@verizon.net

Workshop description

The workshop theme is developing a dialogue about the role risk science can play as a natural extension of faculty research or of faculty curriculum in environmental sciences or studies. Many important environmental topics can be effectively framed in terms of risk (and public decision-making), particularly when the problems have elements of great uncertainty and/or the data are incomplete, unavailable or too expensive to collect/access. The science of risk (and public decision-making) promotes organizing information, illuminating critical inter-relationships and providing insight into risk management options and challenges for resolving environmental problems. Our goal is to inform participants about the following areas: a) risk science; b) a selection of important emerging topics in risk science that are relevant to environmental sciences and studies; c) and opportunities for faculty and student involvement. Material will be presented and active participation from attendees will be encouraged to begin a dialogue. The workshop experience will encourage participants to think broadly about research topics, course curricula, and intra-campus links, as well as to identify areas worthy of further discussion in future CEDD meetings. See Society for Risk Analysis (SRA) www.sra.org, and National Capital Area Chapter of SRA, www.sra.org/ncac.

W-10 Online Education: Supplementing Your Environmental Education Programs and Courses with Open Education Resources

College Hall, Room 222

Facilitator

- John Slater, Southern New Hampshire University and Council of Environmental Deans and Directors (CEDD), j.slater@snhu.edu

Workshop description

The world of higher education is changing rapidly with new acronyms and names such as MOOCs, EdX and Coursera signaling a coming of age of open online education. This workshop introduces environmental program leaders, faculty and students to this world. We will summarize

the current situation and discuss what appears to be developing for the future. We will discuss opportunities for Environmental Education programs and courses to incorporate open education resources into their curriculum. Participants are encouraged to bring examples of their activities to share with others. Participants are encouraged to view the webinar series on Online Education presented by the National Council for Science and the Environment (NCSE) and the Council of Environmental Deans and Directors (CEDD) in fall semester 2012. See <http://www.ncseonline.org/program/Council-of-Environmental-Deans-%2526-Directors>. All participants should bring a laptop to the workshop.

W-11 Climate Change Education: Coming to Your College Classroom

College Hall, Room 351

Facilitators

- David Blockstein, National Council for Science and the Environment, David@NCSEonline.org (chair)
- David Hassenzahl, Chatham University, dhassenzahl@gmail.com
- Andrew Jorgensen, University of Toledo, Andy.Jorgensen@utoledo.edu
- Wil Burns, Johns Hopkins University
- Geoffrey Haines-Stiles, Producer, *Earth: The Operator's Manual*
- John Englander, Author, *High Tide on Main Street*

Workshop description

This workshop is directed towards faculty and graduate students who want to use interdisciplinary approaches to educate their students about Climate Change – its causes, consequences, solutions and opportunities for engagement. Participants will learn how to use the Climate Adaptation and Mitigation E-Learning (CAMEL) web portal www.CAMELclimatechange.org to find and share high quality content and curricular resources, will be introduced to leading texts, online courses and other resources. Presentations will include Introduction to Geoengineering (Wil Burns), *Earth: The Operator's Manual*, (Geoffrey Haines-Stiles, Producer) and *High Tide on Main Street*, John Englander, Author. Workshop participants are encouraged to bring an example of a curricular resource they use to share with others in the workshop and through CAMEL.

W-12 Strengthen Leadership of Administration of Interdisciplinary Environmental and Sustainability Programs

Canevin Hall, Room 206

Facilitator

- Rod Parnell, Northern Arizona University, Roderic.Parnell@nau.edu

Workshop description

This workshop is designed to identify common leadership challenges, evaluate commonly used tools to address these challenges, identify resources for leaders of interdisciplinary environmental and sustainability programs, and build connections between current and future leaders across the country. We will utilize a World Café style to discuss common challenges and tools, and use additional case study analyses to address not raised during the World Café. We will use the world café to focus on challenges, solutions/tools, and identifying effective resources. Our goal is to bring current and future leaders of similar programs and institutions together to share experiences and to identify common challenges, tools, and opportunities.

Participants will be expected to bring to the workshop a case study of a specific challenge to an interdisciplinary environmental/sustainability program, and also bring an example of an effective (or ineffective) response or tool meant to address that challenge. The first stage of the workshop will be to identify common challenges for our environmental/sustainability programs, including: i) setting the context of the program within the college or university setting, and promoting our own programs within our institutions, ii) being more effective in outreach to and communication and cooperation with other units; iii) addressing the logistics unique to interdisciplinary programs with respect to program growth, staffing and scheduling of courses; developing faculty, space, and other program resources; and recruiting, hiring, mentoring, evaluating and promoting faculty. Curriculum development, implementation, and assessment will not be a major focus of this workshop. The second stage will be to identify and assess tools specific to interdisciplinary programs.

Reception

5:00–7:00 p.m.

Power Center Ballroom

Opening Keynote Panel

7:30–8:30 p.m.

Power Center Ballroom

President's Opening Address

Phil Camill, AEES President

Devastation and Renewal: Perspectives on the Environmental History of Pittsburgh

Joel A. Tarr, Richard S. Caliguiri University Professor of History and Policy, Carnegie Mellon University

Joel A. Tarr is the Richard S. Caliguiri University Professor of History and Policy at Carnegie Mellon University. His main research interests are in the history of the urban environment and urban infrastructure systems. He is the author of *The Search for the Ultimate Sink: Urban Pollution in Historical Perspective* (1996), *The Horse in the City: Living Machines in the 19th Century* (2007), the editor of *Devastation and Renewal: An Environmental History of Pittsburgh and Its Region* (2004), and, with Gabriel Dupuy, *The Rise of the Networked City in Europe and America* (1988). His articles and papers on the urban environment and urban technologies have appeared in numerous journals and edited volumes. He is the recipient of Carnegie Mellon University's 1992 Robert Doherty Prize for "substantial and sustained contributions to excellence in education" and of the 2008 Leonardo da Vinci Medal of the Society of the History of Technology awarded for outstanding contributions to the field.

Urban Environments, Environmental Justice, and Children

Paul Mohai, School of Natural Resources and Environment, and Institute for Social Research, University of Michigan

Paul Mohai is a Professor in the School of Natural Resources and Environment and a Faculty Associate at the Institute for Social Research at the University of Michigan, Ann Arbor, where he teaches courses on

Environmental Justice, Environmental Policy, and Environmental Public Opinion. He was an early and major contributor to the growing body of quantitative research examining the disproportionate environmental burdens in low income and people of color communities. A significant outcome of this early research was the organization of the historic 1990 "Michigan Conference on Race and the Incidence of Environmental Hazards" with colleague Dr. Bunyan Bryant. Professor Mohai also served on the National Advisory Committee to the First National People of Color Environmental Leadership Summit, and was a member in the early 1990s of the "Michigan Coalition" that advised the U.S. EPA on environmental justice policy. He is currently a member of EPA's National Environmental Justice Advisory Council (NEJAC). His current research involves national level studies examining the causes of environmental disparities and the role environmental factors play in accounting for racial and socioeconomic disparities in health. He is also examining pollution burdens around public schools and the links between such burdens and student performance and health. He is the author or co-author of numerous publications on the subject of race and the environment.

Thursday, 20 June

Breakfast Roundtables

7:30-9:00 a.m.

Options Café, Duquesne Union

R-1 Incorporating Professional Development into Environmental Studies and Science Senior Programs (*mealtime roundtable*)

Coordinators

- Karin Warren, Randolph College, kwarren@randolphcollege.edu (Chair)
- Karen Berger, University of Rochester, karen.berger@rochester.edu

R-2 How Can the Arts Be Integrated into ESS? (*mealtime roundtable*)

Coordinator

- Jennifer Joy Pawlitschek, Independent Artist, jjoy@jenniferjoyonline.com

Meeting of The Journal for Environmental Studies and Science Editorial Board

7:30-9:00 a.m.

College Hall, Room 222

Session A

9:00-10:30 am

Power Center Ballroom

A-1 PLENARY SESSION

- Shirley Vincent, Director of Education Research, National Council for Science and the Environment, svincent@ncseonline.org

Shirley Vincent earned her Ph.D. in environmental science at Oklahoma State University and holds a B.S. and M.S. in Biological Science from the University of Tulsa. A leader in the field of environmental education, she serves as an advisor to the Executive Committee of the Council of Environmental Deans and Directors and is an associate editor for the *Journal of Environmental Studies and Sciences*. She has held leadership positions in the Association for the Advancement of Sustainability in Higher Education, the Association of Environmental Studies and Sciences, the Society for Human Ecology, and led the ASTM International Worldwide Standards Subcommittee on Environmental Risk Assessment, Communication and Management task group. This group published the international standard titled *Standard Guide for a Framework for a Consensus-based Environmental Decision-making Process*. She also participated in the initial development of the education and research indicators for the Association for the Advancement of Sustainability in Higher Education's Sustainability, Tracking, Assessment and Rating System (STARS). Her publications include the 2010 NCSE report *Interdisciplinary Environmental Education on the Nation's Campuses: Elements of Field Identity and Curriculum Design*, as well as a number of other reports and scholarly articles on interdisciplinary environmental and sustainability education.

Presentation

The State of Environmental Studies and Sciences: READY to Create The Future We Want (READY = R-relevant, E-engaged, A-adaptive, D-dynamic, Y-youthful)

Exhibitors

10:00 a.m.-6:00 p.m.

Shepperson Suite, Power Center

Session B

11:00 a.m.-12:30 p.m.

B-1 Learning Here and There: Study Abroad Themes, Projects and Outcomes for Environmental Sciences and Studies (discussion symposium)

College Hall, Room 222

Presenters

Anne Gallagher-Ernst, Skidmore College, agallagh@skidmore.edu (Chair)

- *Enhancing Interdisciplinary Inquiry in Global Change Science through International Study Seminars*
Karin Warren, Randolph College, kwarren@randolphcollege.edu
- *Integrating Short-term Study Abroad Experiences into an Interdisciplinary Environmental Studies Curriculum*
Jonathon Lyon, Merrimack College, lyonj@merrimack.edu
- *Connecting the Dots: Incorporating an International Experience into the Environmental Studies Capstone*
Leon-C Malan, Colby-Sawyer College, lmalan@colby-sawyer.edu
- *Conserving Biodiversity, Promoting Sustainability from Argentina to Vietnam: A Qualitative Analysis of Study Abroad Experiences*
Nurcan Atalan-Helicke, Skidmore College, natalanh@skidmore.edu; and Anne Gallagher-Ernst, Skidmore College, agallagh@skidmore.edu

B-2 Rural / Urban Dimensions of Renewable Energy Conflicts (discussion symposium)

College Hall, Room 225

Presenters

- Stewart Fast, University of Ottawa, sfast@uottawa.ca (Co-chair)
- Tricia Dutcher, University of Nevada Las Vegas, tmynster@hotmail.com (Co-chair)
- Roopali Phadke, Macalester College, phadke@macalester.edu
- Stephen Hill, stephenhill@trentu.ca, Trent University

B-3 The Role of Marginalized Peoples in Sustainability Solutions: How Do Environmental Studies Scholars, Practitioners and Students Approach This Critical Need?

College Hall, Room 346

Presenters

Soraya Cardenas, University of Maine at Fort Kent, sorayacar@yahoo.com; and Abigail Abrash Walton, Antioch University New England, aabrash@antioch.edu (Co-chairs)

- *Environmental Leadership: Thinking Outside the White Box*
Soraya Cardenas, University of Maine at Fort Kent, sorayacar@yahoo.com
- *Reflection, Responsibility, and Engaging Effective Participation in Sustainability: What Questions Do You Ask?*
Abigail Abrash Walton, Antioch University New England, aabrash@antioch.edu

B-4 Fracking: Controversy, Communication and Consequences, Part I

College Hall, Room 351

Presenters

Hilary Boudet, Oregon State University, hilary.boudet@oregonstate.edu (Chair)

- *Views on Fracking: Results from a National Survey*
Hilary Boudet and Dylan Bugden, Oregon State University, bugdend@onid.orst.edu
- *Emerging Risk Communication Challenges Associated with Shale Gas Development*
Chris Clarke, George Mason University, cclark27@gmu.edu
- *The Unconventional Boomtown: Updating the Energy Development Impact Model to Fit New Spatial and Temporal Scales*
Jeffrey Jacquet, South Dakota State University, jeffrey.jacquet@sdstate.edu
- *Social Representations of Natural Gas Development via Hydraulic Fracturing in the Marcellus Shale*
Darrick T. Evensen, Cornell University, dte6@cornell.edu

B-5 Flows of Waste: Linking Rural and Urban Societies and Ecologies through “Waste.” Part I: Organic Waste

Canevin Hall, Room 201

Presenters

Shaunna Barnhart, Allegheny College, sbarnhart@allegheny.edu (Chair)

- *Purification or Profit: Sewage Recycling and the Contradictions of Sludge*
Daniel Schneider, University of Illinois, ddws@illinois.edu
- *Challenging Land Application of Biosolids/Sewage Sludge Fertilizer*
Shaunna Barnhart, Allegheny College, sbarnhart@allegheny.edu
- *Constructing Theater Scenery that is Waste Free, Good for the Environment, and Good for People*
Maxwell Lindquist, Michael Mehler, Elizabeth A. Olson, Tanja Beer, Eric Pallant, Shannon Wade, Lesley Fairman and Samantha Hoderlein

B-6 Interdisciplinary Challenges in Environmental Public Health - Part I: The Built Environment and Social Science Approaches to Environmental Health

Canevin Hall, Room 204

Presenters

Christine Vatovec, University of Vermont, cvatovec@uvm.edu; and Greg Howard, Dickinson College, howardg@dickinson.edu (Co-chairs)

- *Childhood Lead Exposure: Have Epidemiology, Toxicology, Regulation, Public Health, and Remediation Worked Together to Protect Children?*
Martha Richmond, Suffolk University, mrichmond@suffolk.edu
- *Re-creating a Healthy Home: The Contributions of the Built Environment to Environmental Health*
Caryl Waggett, Allegheny College, cwaggett@allegheny.edu
- *Social and Environmental Determinants of Type 2 Diabetes in Estelí, Nicaragua*
Barbara Goldoftas, Clark University, bgoldoftas@clarku.edu; and Christopher Bacon, Santa Clara University
- *Hazards on the Ward: The Role of Sociology in Assessing the Environmental Health Impacts of Medical Care*
Christine Vatovec, College of Medicine, University of Vermont, cvatovec@uvm.edu

B-7 American Food Security: Improving the Resilience of Our Food Supply. Part I: Conceptual Framework and Historical Perspective

Canevin Hall, Room 306

Presenters

- *An overview of American Food Resilience*
Gerry Marten, East-West Center, gerrymarten@hawaii.rr.com (Chair)
- *The Dismantling and Reconstruction of the Food System: Lessons of Food Resilience from Two World Wars*
Alesia Maltz, Antioch University New England, amaltz@antioch.edu
- *Growing a Global Food System: Agriculture, Environment and Power in America, 1945-1995*
Bryan McDonald, Pennsylvania State University, bryan.l.mcdonald@gmail.com
- *Global Fishery Collapse: Theory and Potential Variables*
Peter Jacques, University of Central Florida, Peter.Jacques@ucf.edu
- *Perspectives on Global Climate Change and Food Security*
Mohammed F. Rabbi, Valley Forge Military College, mrabbi@vfmac.edu

B-8 Linking Rural and Urban Societies and Economies: Case Studies from Developing Countries

Canevin Hall, Room 313

Presenters

Maria Aileen Leah G. Guzman, ajestiva@gmail.com; and Sarah Darkwa sardarks@yahoo.co.uk (Co-chairs)

- *Seaweed Farming: Alternative Livelihoods to Buffer Climate Impacts*
Angela Whitney, Yale University, angela.whitney@yale.edu
- *Investigating Role of Local Institutions in Rule Enforcement in Natural Resource Management in the Central Himalayas, India*
Divya Gupta, The Ohio State University, gupta.303@osu.edu
- *Quantifying the Impact of a Growing Metropolis on its Rural Periphery: A Case Study of Metro Manila, Philippines*
Jude Estiva, judestiva@yahoo.com; and Maria Aileen Leah G. Guzman, ajestiva@gmail.com
- *From Sacred Grove to Farm Field: New and Continuing Threats to Church Forests in Rural Ethiopia*
Travis Reynolds, twreynol@colby.edu

Lunch Roundtables

12:30-2:00 p.m.

Options Café, Duquesne Union

R-4 How is Diversity/inclusion Moving Ahead in Environmental Studies and Sciences at Your Institution, in Your Teaching, or in Your Field? (Mealtime roundtable)

Coordinators

- Soraya Cardenas, University of Maine at Fort Kent, sorayacar@yahoo.com (Chair)
- Nancy Rich, nrich@antioch.edu (Co-chair)

R-5 Listening for Stories of Change (Mealtime roundtable storytelling performance)

Performer/Facilitator

Ju-Pong Lin, Community Performance Artist, jupong.lin@goddard.edu

R-6 An Insider's View of the Udall Undergraduate Scholarship (Mealtime roundtable)

Coordinators

- Rich Wallace, Ursinus College, rwallace@ursinus.edu
- Katie Purvis-Roberts, Pitzer College, kpurvis@kecksci.claremont.edu

Session C

2:00-3:30 pm

C-1 Gender Issues and Dynamics in ESS

(discussion symposium)

College Hall, Room 222

Facilitators

- Kim Smith, Carleton College, ksmith@carleton.edu (Chair)
- Heather R. Rodriguez, Central Connecticut State University, hrodriguez@ccsu.edu
- Jane Wolfson, Towson University, jwolfson@towson.edu

C-2 Student Organic Gardens: Case Studies from Across the US

College Hall, Room 225

Presenters

Leslie A Duram, Southern Illinois University, duram@siu.edu (Chair)

- *LOGIC: The Student Organic Garden at Southern Illinois University*
Leslie A. Duram, Southern Illinois University, duram@siu.edu
- *Channeling Student Ambitions: Lessons Learned in Campus Gardens and Community Activism*
Kip Curtis, Eckerd College, curtiska@eckerd.edu
- *Student Organic Gardens: Case Studies from Across the US*
Jennifer R. Reeve, Utah State University, jennifer.reeve@usu.edu.
Co-authors: Tamara Steinitz and Kelsey Hall.
Stacey Sommerfield, Bucknell University, sns004@bucknell.edu
- *Building and Sustaining Community Support for the Student Organic Garden and Orchard at Randolph College*
Karin Warren, Randolph College, kwarren@randolphcollege.edu; and
Ludovic Lemaitre, Randolph College, llemaire@randolphcollege.edu

C-3 Imagined Communities: Linking Rural and Urban Environmentalisms

College Hall, Room 351

Presenters

Amanda Hagood, Hendrix College, hagood@hendrix.edu (Chair)

- *The Hillbilly Effect: How Stereotyping Protected the Ozarks*
Molly Elders, Hendrix College, eldersmr@hendrix.edu
- *Working Toward Sustainability: The Notion of Sumak Kawsay and Insights from Fieldwork in Southern Ecuador*
Lisa C. DePaoli, Indiana University of PA and University of Pittsburgh, lcdepaoli@yahoo.com

- *Historical Ecology, Public Perception, and Restoration of Urban Estuaries in Los Angeles, California*
Shelley L. Luce, Santa Monica Bay Restoration Commission, sluce@santamonica.org. Co-authors: Eric Strauss, Karina Johnston
- *Restoring Nature in Protected Areas*
Gordon Steinhoff, gordon.steinhoff@usu.edu

C-4 Psychological Distance and Motivating Action on Environmental Issues

Canevin Hall, Room 201

Presenters

Ajay Singh, The Ohio State University, Singh.353@osu.edu (Chair)

- *An Overview of the Psychological Distance of Risk*
Robyn Wilson, The Ohio State University, wilson.1376@ocu.edu
- *Construing Risk: Testing the Effects of Psychological Distance on Risk Perception*
Adam Zwickle, The Ohio State University, Zwickle.1@osu.edu
- *Climate Adaptation and Mitigation Policy Framing: Application of Psychological Distance to Policy Support*
Ajay Singh, The Ohio State University, Singh.353@osu.edu

C-5 Interdisciplinary Challenges in Environmental Public Health - Part 2: Toxins/ environmental Exposures and Ways to Engage Community Health and Policy

Canevin Hall, Room 204

Presenters

Greg Howard, Dickinson College, howardg@dickinson.edu (Co-chair)

Christine Vatovec, University of Vermont, cvatovec@uvm.edu (Co-chair)

- *Environmental Health Monitoring: Lessons from the Classroom and the Community*
Greg Howard, Dickinson College, howardg@dickinson.edu. Co-author: M. K. Scammell.
- *Pesticide Exposure among Farmworkers in Egypt: Using Epidemiology to Explore Environmental Health*
Rebecca Smullin Dawson, George Mason University, bsmullin@gmail.com
- *Challenges of Voluntary Chemicals Management Strategies for Protecting Human and Environmental Health: Lessons for Toxic Substances Control Act Reform in the US*
Caroline Scruggs, University of New Mexico, cscruggs@unm.edu. Co-authors: Leonard Ortolano, Mike Wilson, and Megan Schwarzman.
- *Seeing Ecotoxicology through an Environmental Health Lens: Using Challenge Based Learning Model for a More Connected Learning Experience*
Molly Mehling, Chatham University, mmehling@chatham.edu

C-6 ESS Pedagogy: Service Learning

Canevin Hall, Room 306

Presenters

Mary Anne Carletta, Georgetown College,
mcarlet0@georgetowncollege.edu (Chair)

- *Teaching Local Environmental Issues Using Service Learning and GIS*
Mary Anne Carletta, Georgetown College,
mcarlet0@georgetowncollege.edu
- *Real Time Experiences with Food and Sustainability*
Henderson W. Pritchard, Wentworth Institute of Technology,
Pritchardh@wit.edu
- *Food Justice: Learning and Action Across Boundaries*
Susan M. Mooney, smooney@stonehill.edu. Co-author: Bridget Meigs
- *Re-energizing Campus-Community Connections: A Pilot Program of Southeastern Schools and Their Local Communities*
Katherine Kransteuber, Furman University,
katherine.kransteuber@furman.edu
- *Creating Collaborative Spaces: Using Team-Based Learning to Teach Restoration Ecology*
Rebecca Vidra, Duke University, vidra@duke.edu

C-7 Forests and Climate Change

Canevin Hall, Room 313

Presenters

- Vikki L. Rodgers, Babson College, vrodgers@babson.edu (Chair)
- *Relationship Chemistry: Exploring the Effects of Frankia Bacteria on the Performance of Alnus and non-Alnus Associated Ectomycorrhizal Fungi*
Julia Huggins, Lewis & Clark College, jhuggins@lclark.edu
 - *Private Residential Urban Forest Structure and Carbon Storage in a Moderate-sized Urban Area in the Midwest, U.S.*
Mikaela Schmitt-Harsh, Carleton College, mschmitt@carleton.edu.
Co-authors: Sarah Mincey; Matt Patterson; Burnell Fischer; and Tom Evans
 - *Exploring the Future of Ecosystem Services in Pennsylvania with Scenario Analysis*
Kshama Harpanka, Lebanon Valley College, harpanka@lvc.edu
 - *The Responses of Six Common Tree Species Exposed to Experimentally Altered Climate at the Boston Area Climate Experiment (BACE)*
Vikki L. Rodgers, Babson College, vrodgers@babson.edu. Co-authors: Susanne S. Hoeppner and Jeffrey S. Dukes.

C-8 Urban Sustainability: Water and Power Infrastructure

Canevin Hall, Room 314

Presenters

- Yehuda L. Klein, CUNY, yklein@brooklyn.cuny.edu (Chair)
- *Building Greener Communities: The Energy-Water Nexus*
Yehuda L. Klein, CUNY, yklein@brooklyn.cuny.edu. Co-author and co-Presenter: Hildegaard Link
 - *Urban Soil Survey to Facilitate Green Infrastructure to Alleviate Combined Sewer Overflows in Urban Settings*
Russell Losco, Lanchester Soil Consultants, Inc., soildude@comcast.net. Co-authors: S. Dadio and A. Barkasi.
 - *Media Discourse on Aging Infrastructure in the U.S.*
Sridhar Vedachalam, Cornell University, sv333@cornell.edu
 - *The Influence of Preference Power Allotments on Energy Conservation and Sustainable Community Development*
Curt Gervich, SUNY, Plattsburgh, cgerv001@plattsburgh.edu.
Co-authors: Damian Pitt and Michelle Trimper

Session D

4:00-5:30 p.m.

D-I Teaching Environmental (Public) Health in an ESS context (discussion symposium)

College Hall, Room 222

Facilitators

- Greg Howard, Dickinson College, howardg@dickinson.edu (Co-chair)
Barbara Goldoftas, Clark University, bgoldoftas@clarku.edu (Co-chair)
- *Creating a collaborative study of an urban watershed across four courses*
Barbara Goldoftas, Clark University, bgoldoftas@clarku.edu
 - *Using Community-Based Participatory Research in an environmental health course*
Christine Vatovec, University of Vermont, cvatovec@uvm.edu
 - *Environmental public health lab/fieldwork components for ESS courses*
Greg Howard, Dickinson College, howardg@dickinson.edu
 - *Women, Health, and Environment: a Disturbing Course*
Stephanie Kaza, University of Vermont, skaza@uvm.edu
 - *Environmental Health Outside Academia: Alternative Adult Education Models*
Sasha Adkins, Antioch University New England,
sasha.adkins18@gmail.com
 - *Embedding Environmental Public Health Research into the Classroom*
Caryl Waggett, Allegheny College, cwaggett@allegheny.edu

D-2 Living in a Fracked World: Differential Effects of Shale Gas Development on Rural, Peri-urban and Urban Ecologies (discussion symposium)

College hall, Room 225

Presenters

- Andrew Brooks, CUNY Graduate Center, abrooks@gc.cuny.edu (Chair)
- Michael Finewood, Chatham University, mfinewood@chatham.edu
- Jill Kriesky, Southwest Pennsylvania Environmental Health Project, jkriesky@environmentalhealthproject.org
- Kirk Jalbert, Rensselaer Polytechnic Institute, jalbek@rpi.edu
- Peter Rogers, Colgate University, progers@colgate.edu

D-3 Environmental Studies and International/Global Studies: Starting a Conversation

(discussion symposium)

College Hall, Room 346

Facilitators

- Ken Wilkening, University of Northern British Columbia, kew@unbc.ca (Chair), and
- William Markham, University of North Carolina at Greensboro, wtmarkha@uncg.edu

D-4 Pittsburgh Milestones on the Path to a Sustainable Future (discussion symposium)

College Hall, Room 351

Presenters

- Patricia M. DeMarco, Chatham University, demarcop6@gmail.com (Chair)
- *Living Building Installation from an Existing Historic Conservatory to a New Addition Based on Zero Net Energy/Zero Net Water Waste Reclamation Practice*
Richard Piacentini, Phipps Conservatory and Botanical Garden, RPiacentini@phipps.conservatory.org
 - *Green Chemistry Practice to Prevent Contamination of Living Systems and to Remove Contaminants from Public Water Supply Using the TAML Catalyst System*
Terry Collins, Green Chemistry, Carnegie Mellon University, tc1u@andrew.cmu.edu

- *The Role of the Hyperlocal in Regional Sustainability: Community-engaged, Place-based Research, Monitoring and Communication for a More Integrated Approach toward Improving Pittsburgh's Biodiversity and Waterways*
Molly Mehling, Ecology and Sustainability, Chatham University, MMehling@chatham.edu
- *Champions 4 Sustainability Program for Businesses Providing Training and Recognition for Sustainable Business Practices across a Wide Array of Participants*
Matthew Mehalik, Sustainable Pittsburgh, MMehalik@sustainablepittsburgh.org
- *The Schwartz Market Project as an Example of a Transition Town Application*
Elisa Beck, elisabeck@aol.com

D-5 Food and Urban Environments

Canevin Hall, room 201

Presenters

- David Utsler, University of North Texas, dgutsler1@sbcglobal.net (Chair)
- *Hidden Valley: Commodity Food and Invisible Farms*
M. Joseph Aloï, University of North Texas, joeyaloi@gmail.com
 - *Against the Grain: A Critique of Industrial Agriculture with Perspective on How Traditional Ecological Knowledge Can Help Restore the World's Food Supply*
Jennifer Onorati, University of North Texas, Jennifer.Onorati@unt.edu
 - *Bound by Plastic: The Role of Food Packaging in the Biocultural Homogenization of Urban Foodways*
Alexandria Poole, University of North Texas, alexandria.poole@gmail.com
 - *Healthy Food, Healthy Minds: The Psychological Significance of Food in the City*
David Utsler, University of North Texas, dgutsler1@sbcglobal.net

D-6 Contested Countryside: Understanding Land-use Conflicts Rural and Ex-urban Areas

Canevin Hall, Room 204

Presenters

Stephen Hill, Trent University, stephenhill@trentu.ca (Chair)

- *Governance, Planning and Engagement for Green Energy Deployment in a Heated Climate*
Stephen Hill, Trent University, stephenhill@trentu.ca
- *Biodiversity Conservation in a Settled Landscape: Science, Stakeholders, and the Management of Land Use Conflicts*
Stephen Bocking, Trent University, sbocking@trentu.ca
- *By Invitation Only: Reframing the Power of Developers over Land Use Change*
Gerda R. Wekerle, York University, gwekerle@yorku.ca. Co-author: Donald Leffers.
- *Mega-quarry, Mega-death: Social Movements, Science and the Melancton Quarry Proposal in Douthern Ontario*
Lisa Wallace, lisa.jean.wallace@gmail.com; and L. Anders Sandberg, York University

D-7 New Gender Directions for Environmental Research

Canevin Hall, Room 306

Presenters

Adelle Montebianco, University of Colorado at Boulder, adelle.montebianco@colorado.edu (Chair)

- *Chicana Feminist Cartographies: Ecological Narratives amidst a Landscape of Misrecognitions*
Christina Holmes, DePauw University, christinaholmes@depauw.edu
- *These are some of their stories*
Marya Czech, Lourdes University
- *Nature and Masculinity: Son, Put Away Your Cell Phone and Let's Go Fishing!*
Heather R. Rodriguez, Central Connecticut State University, hrodriguez@ccsu.edu

D-8 Technologies: Risk, Trust, and Citizen Participation

Canevin Hall, Room 313

Presenters

Laura J. Stroup, Saint Michael's College, lstroup@smcvt.edu (Chair)

- *People, Products, and Nanotechnology: An Environmental Risk Judgment Analysis*
Mary Collins, mbcoll@gmail.com
- *Risk, Regulation and Recreancy in Southwestern Pennsylvania*
Anjel Stough-Hunter, stoughha@ohiodominican.edu
- *Vermont's NIMBY-complex Concerning Energy*
Laura J. Stroup, Saint Michael's College, lstroup@smcvt.edu
- *Theoretical Implications of Household Environmental Behavior Change Using a Private Well Water Testing Context*
Crista L. Straub, University of Maine, crista.straub@umit.maine.edu

Aess Membership Reception and Business Meeting

5:45-7:00 p.m.

Power Center Ballroom

The annual business meeting is a great way for AESS members to get involved in the strategic planning of the organization. It's an opportunity to meet and collaborate with the AESS Board of Directors to discuss current and future initiatives. What new directions would you like to see AESS consider, and how can we help make AESS work better for you? Everyone is welcome, and refreshments will be provided. We look forward to seeing you at the meeting!

Dinner on Your Own

7:00

Come to the registration table if you would like to meet up with people around your interests.

Friday, 21 June

Meeting of JESS/AESS Boards re JESS Self-study/Review

7:30 a.m.

College Hall, Room 551

Breakfast Roundtables

7:30-9:00 a.m.

Options Café, Duquesne Union

R-5 Environmentalists of Color Caucus

(mealtime roundtable)

Facilitator

- Maria (Aileen) Guzman, ajestiva@gmail.com

R-6 Environmental Studies and International/ Global Studies: Starting a Conversation

(mealtime roundtable)

Coordinators

- Ken Wilkenning, University of Northern British Columbia, kew@unbc.ca
 - William Markham, University of North Carolina at Greensboro, tmarkha@uncg.edu
-

Session E

9:00-10:30 a.m.

E-1 Flows of Waste: Linking Rural and Urban Societies and Ecologies through “Waste.”

Part 2: eWaste and Heavy Metals

College Hall, Room 222

Kate Darby, Allegheny College, kdarby@allegheny.edu (Co-chair)

Shaunna Barnhart, Allegheny College, sbarnhart@allegheny.edu (Co-chair)

- *The Cost of Copper: Contradictions, Displacement and Environmental Injustice at the El Paso Smelter*

Kate Darby, Allegheny College, kdarby@allegheny.edu

- *International Generation and Flow of E-waste: Consequences for Human and Environmental Health and Recommendations for a More Sustainable Future*

Caroline Scruggs, University of New Mexico, cscruggs@unm.edu. Co-author: Nardono Nimpuno

- *Mercury and Air Toxics Standards on the Reuse of Coal Combustion Residuals in Mine Reclamation*

Ian Aziz Arturo, arturoi@allegheny.edu

- *Legacy of Lead in Western Pennsylvania: Historic and Current Management of Residual Lead in Soils*

Sarah Morgan, Allegheny College; and Sara Schombert, Allegheny College, schomberts@allegheny.edu. Co-author: Caryl Waggett.

E-2 Energy Poverty, Disruption and Scarcity - Part I: Exploring Social Drivers of Sustainable Energy innovations in the Global North and Global South

College Hall, Room 225

Presenters

Robert Bailis, Yale University, robert.bailis@yale.edu (Chair)

- *The Power Effete? Grid Independence Projects on Campus and in Sustainable Communities*

Glenn Weinberg, City University of New York, gtweinberg@gmail.com

- *Nothing is Right: The Welfare Impact and Political Implications of Nigeria's 2012 Fuel Subsidy Reduction*

Justin Scott, Yale University, Justin.scott@yale.edu

- *Environmental and Socioeconomic Indicators for Sustainability of Energy Innovation*

Virginia Dale, Oak Ridge National Laboratory, dalevh@ornl.gov

- *Lessons From My Gate to Military Forward Operating Bases for Making Choices About Sustainable Post-Disaster and Remote Energy Provision*

Rush Robinett, Michigan Technological University, lebrdr@live.com

E-3 A Tale of Two Watersheds: Balancing Urban and Rural Water Interests in Mexico's Atoyac Watershed and the New York City Catskill Delaware System

College Hall, Room 346

Presenters

Monique Segarra, Bard College, Segarra@bard.edu (Chair)

- *Assessing the New York City Watershed Program: Lessons Learned*

John Schwartz, NYC Environmental Protection,

JSchwartz@dep.nyc.gov

- *Rainwater Harvesting in Oaxaca: Constraints and Promise*
Gautam Sethi, Bard Center for Environmental Policy, sethi@bard.edu
- *Democratizing Water: Civil Society and State Collaboration in Oaxaca*
Monique Segarra, Bard Center for Environmental Policy,
Segarra@bard.edu

E-4 Agriculture, Water Quality and Climate Change

College Hall, Room 351

Presenters

Robyn Wilson, The Ohio State University, wilson.1376@osu.edu (Chair)

- *Determinants of Landowners' Decision to Enroll in Conservation Reserve Enhancement Program in Saginaw Bay Watershed*
Felix K. Yeboah, Michigan State University, yeboahfe@msu.edu. Co-authors: Frank Lupi and Michael D. Kaplowitz.
- *Offsetting the Predicted Negative Impacts from Climate Change through Changes in Human Behavior: Farmers, Nutrient Management, and Local Water Quality*
Robyn Wilson, The Ohio State University, wilson.1376@osu.edu
- *Vegetarians against Climate Change?: Exploring the "Vegans save the earth" discourse in Taiwan*
Tze-Luen Lin, National Taiwan University, tlin@ntu.edu.tw
- *Agriculture and the Environment: An Ethical and Philosophical Analysis of Anti-modern and Non-modern Concepts of Environmentally Responsible Agriculture*
Chris Schlottmann, New York University, cps236@nyu.edu

E-5 Assessing Sustainability Education

Canevin Hall, Room 201

Presenters

Richard Watts, University of Vermont, rwatts@uvm.edu (Chair)

- *Consolidating and Mainstreaming of Environment and Sustainability Education in Asian and African Universities: The Case of Ateneo de Manila University and University of Cape Coast*
Sarah Darkwa, sardarks@yahoo.co.uk. Co-author: Maria (Aileen) Guzman, ajestiva@gmail.com
- *Sustainability Across the Curriculum: Developing and Using a Knowledge Assessment Tool*
Tom Koontz, The Ohio State University, koontz.31@osu.edu
- *Valuing Institutional History in Environmental Studies*
Richard Watts, University of Vermont, rwatts@uvm.edu; and Stephanie Kaza, University of Vermont, skaza@uvm.edu

Presentations by Student Award Finalists

9:00-10:30 a.m.

Canevin Hall, Room 313

E-6 Student Award Presentations

Coordinator

- Rod Parnell, Rod Parnell, Northern Arizona University, rod.parnell@nau.edu (Chair)

Description

Come hear outstanding presentations by students selected as finalists for the AESS 2013 Student Presentation Awards. Open to all. Help support and celebrate the next generation of AESS scholars!

Session F

11:00 a.m.-12:30 p.m.

F-1 American Food Security: Improving the Resilience of our food supply. Part 2: Case Studies of Risk Amelioration

College Hall, Room 222

Presenters

Gerry Marten, East-West Center, Honolulu, Hawaii, gerrymarten@hawaii.rr.com (Chair)

- *Thinking in Systems Terms about Food Security*
Krystina Stave, University of Nevada, Las Vegas, krystyna.stave@unlv.edu
- *The Social Distribution of Risk in Conventional and Alternative Food Systems*
Brian Thomas, Saginaw State University, bjthoma1@svsu.edu
- *Food System Counter-Interventions: Addressing the Impacts of Poverty in Inner City St. Petersburg*
Kip Curtis, Eckerd College, kip.curtis@gmail.com
- *Hubs of Resilience? Cultivating Foodsheds via Food Hubs: A Case Study of GrowFood Carolina*
Todd LeVasseur, Charleston College, levasseurtj@cofc.edu
- *Food Resilience and Community Building*
Tedd Phillips-Mower, University of Louisville, t.phillipsonmower@louisville.edu

F-2 Pollution Analysis in Urban and Rural Settings

College Hall, Room 225

Presenters

Kathleen Purvis-Roberts, kpurvis@kecksci.claremont.edu (Chair)

- *Air Quality in the Northfield Community: A Class Project for First-Year Students*
Deborah Gross, Carleton College, dgross@carleton.edu
- *Student-driven field projects quantifying volatile organic compounds or metals concentrations in a 2nd-year Environmental Chemistry course*
Juliane Fry, Reed College, fry@reed.edu
- *Quantifying Anthropogenic Semivolatile Compounds in Urban Areas: A Potential Community-based Learning Project*
Nicole C. Bouvier-Brown, Loyola Marymount University, Nicole.Bouvier-Brown@lmu.edu
- *Analysis of Heavy Metal Contamination in Urban Gardens*
Kathleen Purvis-Roberts, Pitzer College, kpurvis@kecksci.claremont.edu

F-3 Flows of Waste: Linking Rural and Urban Societies and Ecologies through “Waste.”

Part 3: Solid Waste Management

College Hall, Room 346

Presenters

Shaunna Barnhart, Allegheny College, sbarnhart@allegheny.edu (Chair)

- *Consumers' Metropolis: Chicagoland's Wastes in the Twentieth and Twenty-First Centuries*
Carl Zimring, Pratt Institute, carl.zimring@gmail.com
- *Flows of Waste: Theoretical Considerations of Waste Streams*
Samantha MacBride, City University of New York, Samantha.MacBride@baruch.cuny.edu
- *Developing a Mass Balance for Construction Materials and Demolition Debris in a Metropolitan Area: A Non-Steady State, Conservative System*
John W. Duggan, Wentworth Institute of Technology, Dugganj@wit.edu

F-4 Integral Ecologies: Integrating Mind, Heart, Body and Spirit

College Hall, Room 351

Presenters

Karen Litfin, University of Washington, litfin@uw.edu (Chair)

- *Living in Eairth: Contemplating Global Atmospheric Politics*
Karen Litfin, University of Washington, litfin@uw.edu

- *The Relational Spiral of Integral Ecology*
Elizabeth Allison, California Institute for Integral Studies, eallison@ciis.edu
- *Reinventing the Human in Thomas Berry's Integral Earth Study*
Sam Mickey, University of San Francisco, sam_mickey@yahoo.com
- *Starting Big: Teaching Environmental Issues through the Story of the Universe*
Richard Peterson, Environmental Studies, University of New England, rpeterson@une.edu

F-5 Interdisciplinary Environmental Program Team USA: Linking Assessment, Professional Competencies, and Careers

Canevin Hall, Room 201

Presenters

Dave Gosselin, University of Nebraska-Lincoln, dgosselin2@unl.edu (Chair)

- *Results from the NCSE 2012 Survey: Assessment in Interdisciplinary Environmental and Sustainability Programs*
Shirley Vincent, National Council for Science and the Environment, svincent@ncseonline.org
- *Exploring 21st Century Professional Competencies of Undergraduate Students in Environmental Studies through a Business Academic Partnership*
Ron Bonnstetter, Talent Training International, LTD, rjb@unl.edu
- *Linking Assessment, Professional Competencies, and Curriculum: A Case Study*
Sara Cooper, University of Nebraska-Lincoln, scooper7@unl.edu
- *Integrating Environmental Professional Career Preparation into a Science-intensive IE Program*
Chris Thaxton, Appalachian State University, thaxtoncs@appstate.edu

F-6 Energy Poverty, Disruption and Scarcity - Part 2: Local Responses and Participatory Socio-technological Innovation Spaces as Drivers of Sustainable Energy Solutions

(discussion symposium)

Canevin Hall, Room 204

Presenters

Elisabeth Graffy, Arizona State University, egraffy@asu.edu (Chair)

- *Trends in the Public Response to Energy-Disrupting Storms: Move, Decentralize, Innovate*
Elisabeth Graffy, Arizona State University, egraffy@asu.edu
- *The Other Energy Crisis: Scarcity in Traditional Energy Systems*
Rob Bailis, Yale School of Forestry and Environmental Studies, robert.bailis@yale.edu

- *Biomass versus Biofuels: The Social Ecology of Energy Transitions in South India*

Jenn Baka, Yale School of Forestry and Environmental Studies,
jennifer.baka@yale.edu

- *Boosting Resiliency in our Electricity Infrastructure*
Robert Hwang, Sandia National Labs, rqhawang@sandia.gov
- *Finding the Right Local Solution: Pursuing Innovation based on Value Systems and Local Context*
Michele Mastroeni, University of Edinburgh,
mmastro1@exseed.ed.ac.uk

F-7 Globalization, Market Forces and Environment in Developing Countries

Canevin Hall, Room 306

Presenters

Kathleen M. Saul, Center for Energy and Environmental Policy,
kmsaul@comcast.net (Chair)

- *Globalization and Deforestation: An Examination of the Environmental Effects of Direct Investment in the Forest Sector in Cameroon*
Richard Mbatu, Temple University, rmbatu@temple.edu
- *A Rose with Any Other Label Wouldn't Smell as Sweet: Eco-labeling and Environmental Governance in the Ethiopian Floriculture Sector*
Nina Hatch, Lindley Wells, Travis Reynolds, twreynol@colby.edu
- *Universal Energy Access by 2030: The Importance of South-South Transfers*
Kathleen M. Saul, University of Delaware, kmsaul@comcast.net; and
Andrea Ruotolo, University of Delaware, ruotolo@udel.edu
- *Factors Influencing Farmers' Pesticide Use on Santa Cruz Island, Ecuador*
Megan O'Connor, State University of New York, College of
Environmental Science and Forestry, meocon02@syr.edu

F-8 Watersheds and Governance

Canevin Hall, Room 313

Presenters

Michael Finewood, Chatham University, mfinewood@chatham.edu
(Chair)

- *The Urban Political Ecology of Flooding in Pittsburgh: A Qualitative Perspective*
Michael Finewood, Chatham University, mfinewood@chatham.edu
- *Understanding Water Quantity in the Headwaters of the Ohio River*
Deborah Lange, dlange@cmu.edu
- *The Role of Heterogeneity in Collaborative Water Management: A Comparative Study*
Pranietha Mudliar, The Ohio State University, mudliar.1@osu.edu

F-9 Telling the Story: Opportunities for Communicating the Environment

Canevin Hall, Room 314

Presenters

Dyanna I. Smith, The Red Eft Project, Antioch University New England,
dsmith2@antioch.edu (Chair)

- *The Power of Perspective Filmmaking: Research Results for "Farmers & Filmmaking: participatory video meets sustainability narrative"*
Dyanna I. Smith, The Red Eft Project, Antioch University New England, dsmith2@antioch.edu
- *Cultural Narratives: Retelling Urban and Rural Children's Stories to Promote Environmental Activism, Citizenship, and Resiliency*
Ninian Stein, Smith College, Ninian@alumni.brown.edu. Co-author:
Shannon Audley-Piotrowsky
- *The GreenEriePA.org project: Helping Communities Communicate about Environmental Assets*
Ann Bomberger, Gannon University, bomberge001@gannon.edu

Afternoon Field Trips

See Registration Website for field trip descriptions

Boxed lunches can be picked up from the Mellon Hall Patio.
Field trips will leave from Bluff Street

Exhibitors

5:30-7:30 p.m.
(pack up by 10:00 p.m.)

Shepperson suite, Power Center

Poster Session

6:00-7:30 p.m. (set up at 5:30 p.m.)

Power Center Ballroom

P-1 Utility Integration for Energy Efficiency: Using Waste Heat for Water Purification by Forward Osmosis

Leslie Abrahams, labrahams@cmu.edu

P-2 Tracking the Campus Carbon Footprint through Student Engagement

James E. Boulter, University of Wisconsin-Eau Claire, boulteje@uwec.edu; and Karen G. Mumford

P-3 Assessing the Impacts of Abandoned Mine Drainage on Tributary 51513 to E. Sandy Creek, Venango County, Pennsylvania

Matt Bricker, Duquesne University, brickerm@duq.edu

P-4 Experiential Learning at UNC-Chapel Hill: Research on Black Soldier Fly Larvae as a Sustainable Animal Feedstock

Susan Caplow, scaplow@live.unc.edu. Co-authors: Neill Bullock, Emily Chapin, Blake Elder, Austin Evans, Matthew Givens, Nathan Jeffay, Betsy Pierce, Wood Robinson

P-5 Investigating Perspectives of Rural Nevadans on Climate Change Solutions

Tricia Dutcher, tmynster@hotmail.com

P-6 Hotspots for Lead Contamination and Urban Gardening Activism as Identified through Newspaper Reports in Sacramento, California

Danqi Fang, University of Illinois at Urbana-Champaign, dfang5@illinois.edu; Therese Banzuela, banzuel2@illinois.edu; and Bethany Cutts, University of Illinois at Urbana-Champaign, bcutts@illinois.edu

P-7 Center for a Livable World: Researching Livability and Sustainability of Small Cities

William Forbes, Stephen F. Austin State University, forbesw@sfasu.edu

P-8 Sustainable Focus: A Chatham University Faculty-Student Collaborative Project for Sustainability Communication

Crystal Fortwangler, Chatham University; Molly Mehling, Chatham University, mmehling@chatham.edu; Katie Cruger, Chatham University; Tony Miga, Chatham University; Ann Payne, Chatham University

P-9 Towards a Social Imaginary of Renewable Energy in Northeast Italy and Arizona

Jen Fuller, Arizona State University, jen.fuller@asu.edu

P-10 Infusing Sustainability Into the Geoscience Curriculum: Changing “Rocks & Minerals” into “Dependence on Earth’s Mineral Resources”

Leah Joseph, Ursinus College, Ljoseph@ursinus.edu; Sally Willig, Ursinus College. Co-authors: Prajukti Bhattacharyya, University of Wisconsin – Whitewater, and Joy Branlund, Southwestern Illinois College

P-11 College Students Fostering Change in a Small Town Community

Brandon Klein, bklein@eureka.edu

P-12 Student Professional Development through Environmental Project Management in an Undergraduate Senior Seminar

Janet MacFall, Elon University, macfallj@elon.edu

P-13 Evacuation Threats to Rural Sustainability

Hal Marchand, Western Illinois University Health Sciences Department, H-Marchand@wiu.edu

P-14 Understanding the “Ecological Native”: The Relationship Between Conservation NGOs and Indigenous Groups

Carley Matsumoto, cmatsumoto@gmail.com

P-15 Linking Upstream and Downstream Communities: Interdisciplinary Learning and Partnership Building through Green Stormwater Infrastructure Projects on the Siena College Campus

Katherine Meierdiercks, Siena College, kmeierdiercks@siena.edu.

Co-Authors: Nicholas Giannetti, Jonathan Glueckert, Timothy Golden, Lauren Griffith, Jacqueline Kelly, Jacob Kruger, Daniel Liguori, Gabriel Mulero, Amanda Stasiewicz, Natalie Topalian

P-16 One Step at a Time: Duquesne University's Third Biennial Greenhouse Gas Emissions Inventory

Megan Morrissey, Duquesne University, morrisseym@duq.edu ; Patrick McKee, Duquesne University, mckee@duq.edu (Co-authors)

P-17 Effects of Elevated Total Dissolved Solids (TDS) on the Survival and Behavior of the Semi-Terrestrial Salamander, *Desmognathus ochrophaeus*

Megan Morrissey, Duquesne University, morrisseym@duq.edu

P-18 Thinking Across Urban to Ex-Urban Gradients: Identifying Opportunities for Understanding Common Sustainable Management Challenges Across Neighboring Watersheds

Gina Mucciolo, Chatham University, gmucciolo@chatham.edu

P-19 Land Trust and University Profits from Partnership: Case Studies Involving Invasive Species and Dendrochronology

Matthew R. Opdyke, Point Park University, mopdyke@pointpark.edu; and Michael Good, Allegheny Land Trust

P-20 Growing a Community through Gardening in Ogden, UT

Monica Romney, Dawn Gatherum, and Barbara Wachocki, Weber State University, bwachocki@weber.edu

P-21 Rural Impact for Economic Development: The Facts and Faces of India's Narmada Valley

Kathleen Saul, Center for Energy and Environmental Policy, kmsaul@comcast.net. Co-author: Kelsea Schumacher

P-22 Thinking Like a River: A Reflection on the First Year of an Anastomosing Initiative at Wofford College

Kaye Savage, savageks@wofford.edu. Co-authors: John Lane, Terry Ferguson, and Haley Briel

P-23 Environmental Education in Environmental Governance

Howard S. Schiffman, New York University, howard.schiffman@nyu.edu

P-24 Community Supported Sustainability: How Ecovillages Model More Sustainable Lifestyles

Jesse Sherry, Rutgers University, jessesherry@gmail.com

P-25 Stakeholder Involvement: Attitudes Toward and Use of a Watershed Model

Crista Straub, University of Maine, crista.straub@umit.maine.edu. Co-authors: Margaret A. Snell, University of Maine, margaret.snell@gmail.com; Jean MacRae, University of Maine, jean.macrae@umit.maine.edu; Andrew Reeve, University of Maine, andrew.reeve@umit.maine.edu; Danielle Martin, University of Maine, danielle.martin@umit.maine.edu; Jessica E. Leahy, University of Maine, jessica.leahy@umit.maine.edu; Norah Bird, University of Maine, norah.bird@umit.maine.edu

P-26 School-Community-University Partnerships for Rural Development in West Africa

Linda Vakunta, University of Wisconsin-Madison, lindavak@gmail.com

P-27 Diversity of News: The Coverage of Contested Environmental Debates through the lens of the Vermont Yankee Nuclear Power Plant debate

Richard A. Watts, University of Vermont, rwatts@uvm.edu

P-28 Determinants of Unconventional Natural Gas Well Placement

John W. Wenzel, Powdermill Nature Reserve, Carnegie Museum of Natural History, wenzelj@carnegiemnh.org; and James V. Whitacre, Powdermill Nature Reserve, Carnegie Museum of Natural History, whitacrej@carnegiemnh.org

P-29 Unifying Datasets to Map Pennsylvania Unconventional Natural Gas Well Development

James V. Whitacre, Powdermill Nature Reserve, Carnegie Museum of Natural History, whitacrej@carnegiemnh.org; John W. Wenzel, Director of Powdermill Nature Reserve, Carnegie Museum of Natural History, wenzelj@carnegiemnh.org

P-30 Map Service Tool for Monitoring Water Quality on a Landscape Level

James V. Whitacre, Powdermill Nature Reserve, Carnegie Museum of Natural History, whitacrej@carnegiemnh.org; John W. Wenzel, Powdermill Nature Reserve, Carnegie Museum of Natural History, wenzelj@carnegiemnh.org

Banquet

7:30 p.m.

Power Center Ballroom

Presentation of Student Awards

Presentation of William R. Freudenburg Lifetime Achievement Award

Dance performances

Can I Conquer You? Dance performance, video and choreography by Emily Kennard, emkennard@gmail.com; scientist-collaborator Carol Kennard

Faceless Mutations Dance performance and choreography by Julie Petry, jpetry@bloomu.edu; “1/2 (Eno)” (music) by Bang on a Can, arranged by David Lang; film performance of Faceless Mutations by the Off-Center Dance Co.

Saturday, 22 June

AESS Council Meeting

7:30-9:00 a.m.

College Hall, Room 551

Photography Exhibition

9:00 a.m.-4:00 p.m.

Mellon Hall

Photographs of the Aral Sea will be on view in the lobby of Mellon Hall. This exhibition accompanies the panel presentation (Saturday 9:00-10:30 a.m.) and the discussion symposium (Saturday 11:00 a.m.-12:30 p.m.) on the topic of "Disaster by Design: Lessons of the Aral Sea for Sustainability." The exhibition is open to all.

Session G

9:00-10:30 a.m.

G-1 Educating Undergraduates to Navigate Facts and Values when Thinking About the Environment (discussion symposium)

College Hall, Room 220

Presenters

- Kate Darby, Allegheny College, kdarby@allegheny.edu (Co-chair)
- Mark Neff, Allegheny College, mneff@allegheny.edu (Co-chair)
- Bethany Cutts, University of Illinois, bcutts@illinois.edu
- Matthew Ferrence, Allegheny College, mferrence@allegheny.edu

G-2 American Food Security: Improving the Resilience of Our Food Supply. Part 3: Planning Research, Teaching, and Action (discussion symposium)

College Hall, Room 222

Presenters

- Gerry Marten, East-West Center, Honolulu, Hawaii, gerrymarten@hawaii.rr.com (Chair)
- James Eflin, Ball State University, jefflin1@bsu.edu
- Panel presenters from Parts 1 and 2

G-3 Fracking: Controversy, Communication and Consequences, Part 2

College Hall, Room 223

Presenters

Curt Gervich, SUNY Plattsburgh, cgerv001@plattsburgh.edu (Chair)

- *Hydraulic Fracturing: Rural and urban environmental effects*
Vanessa Lamers, Yale University, vanessa.lamers@yale.edu
- *Exploring New York State's Decision and Policy Making Process Regarding Hydraulic Fracturing through a Precautionary Lens*
Kevin Kimball, SUNY Plattsburgh, kkimb001@plattsburgh.edu
- *The Environmental Marcellus Shale Advocacy Network in Pennsylvania: Resource Mobilization and Challenges to Addressing Fracking's Impacts on Local Communities*
Michael Irwin, Duquesne University, irwinm@duq.edu. Co-author:
Erin Pischke, Duquesne University, epischke@alumni.cmu.edu
- *Environmental Taxes in Pennsylvania: lessons from 20 years of municipal waste fees.*
Will Delavan, Lebanon Valley College, delavan@lvc.edu

G-4 Alternative Pathways to Environmental Policy Change

College Hall, Room 225

Presenters

Christopher McGrory Klyza, Middlebury College, klyza@middlebury.edu (Chair)

- *Protecting Mayflies, Protecting Mountains? A Comparative Analysis of Old-growth Forestry and Mountaintop Removal Mining Policy Change*
Laura Bozzi, Yale University, laura.bozzi@yale.edu
- *From surfers to sediment: Plugging Holes in the Clean Water Act at the State Level in California*
Sarah Carvill, University of California, Santa Cruz, scarvill@ucsc.edu
- *Mining Sandscapes: County-level Responses to Western Wisconsin's Sand Mining Boom*
Karen Mumford, University of Wisconsin-Eau Claire, mumforkg@uwec.edu
- *Incorporating Climate Science in the Policy Process: Case Studies of Local, State, and Federal Agency Decision-making in the U.S.*
Ajay Singh, The Ohio State University, Singh.353@osu.edu

G-5 Building Green: Towards More Sustainable Built Environments

College Hall, Room 346

Presenters

Melissa Keeley, George Washington University, keeley@gwu.edu (Chair)

- *Environmental Outcomes of Municipal LEED Requirements for Public Buildings*
Melissa Keeley, George Washington University, keeley@gwu.edu
- *Sustainable Campus Development in Multiple Contexts*
David Hassenzehl, Chatham University, dhassenzehl@gmail.com
- *Rainwater Harvesting and the Role of Students in Sustainable Campus Development*
Tony Miga, Chatham University, TMiga@chatham.edu
- *Environmental Ethics as a Design Problem*
Matthew Jelacic, University of Colorado, Boulder, jelacic@colorado.edu

G-6 Contemplative Pedagogy and the Lama Experience

College Hall, Room 351

Presenters

- Jennifer McErlean, Siena College, mcerlean@siena.edu (Chair)
- Juliann Emmons Allison, University of California Riverside, Juliann@ucr.edu
- Samantha DiRosa, Elon University, sdirosa@elon.edu
- Karen Litfin, University of Washington, litfin@u.washington.edu
- Susan Wegner, Bowdoin College, swegner@bowdoin.edu

G-7 Disaster by Design: Lessons of the Aral Sea for Sustainability

Mellon Hall, Maurice Lecture Hall

Presenters

Mike Edelstein, Ramapo College of New Jersey, ecoedelstein@gmail.com (Chair)

- *Disaster by Design: Multiple Caused Catastrophes of the Aral Sea*
Mike Edelstein, Ramapo College of New Jersey, ecoedelstein@gmail.com
- *Agriculture and Environmental Degradation in the Aral Sea Basin: What Next?*
Mike Wilson, Ramapo College of New Jersey, miwilson@ramapo.edu
- *An Unhealthy Place to Live: Prioritizing Public Health Challenges and Concerns about Environmental Contamination in the Region Surrounding the Former Aral Sea*
Ramona Lall, New York City Department of Public Health, Ramona.lall.gunve@gmail.com
- *The Tragedy of the Aral: Counting on Cotton, A Region Loses Its People*
Astrid Cerny, Ramapo College of New Jersey, astridce@gmail.com

G-8 Politics of Climate Change

College Hall, Room 548

Presenters

John C. Berg, Suffolk University, jberg@suffolk.edu (Chair)

- *Planning Urban Climate Change Initiatives without Talking About Climate Change: "Sustaining the Unsustainable" in the Dallas-Fort Worth Metroplex*
Jeff Howard, jhoward@nyu.edu. Co-author: Ann Foss
- *Voluntary Sustainability Commitments as Socio-institutional Transition*
Mary Whitney, mwhitney@chatham.edu
- *Energy Cultures: An Interdisciplinary Approach to Understanding and Influencing Energy Behaviours*
Janet Stephenson, Centre for Sustainability, janet.stephenson@otago.ac.nz
- *Moving Forward on Climate in a Time of Political Paralysis*
John C. Berg, Suffolk University, jberg@suffolk.edu

G-9 "Interdisciplinary" — A Concept in Search of Guidelines and Practicality: A Study of Differing Perspectives and Implications for ESS

College Hall, Room 553

Presenters

Richard L. Wallace, Ursinus College, rwallace@ursinus.edu (Chair)

- *Consensus or Confusion about Interdisciplinarity: Purposes (goals), key elements, and obstacles?*
David Mattson, Yale University
- *Interdisciplinarity in ESS: The Context and History of Our Search for Interdisciplinarity*
Richard L. Wallace, Ursinus College, rwallace@ursinus.edu
- *Interdisciplinarity: A Concept and Practice Seeking Specificity, Consensus, and Application*
Susan G. Clark, Yale University

Session H

11:00 a.m. - 12:30 p.m.

H-1 The Future of Environmental Regulation: The Perspectives of Teachers, Scholars, and Students (discussion symposium)

College Hall, Room 220

Presenters

- Sara R. Rinfret, Hartwick College, rinfrets@hartwick.edu (Chair)
- Bob Duffy, Colorado State University, Robert.Duffy@colostate.edu

- Michelle Pautz, University of Dayton, mpautz1@udayton.edu
- Jeff Cook, Colorado State University, jeff.cook@colostate.edu

H-2 Bioenergy Policy and Transformation to a Green Economy: Conceptualizing and Operationalizing Sustainability Metrics

College Hall, Room 222

Presenters

Jody M. Endres, jendres2@illinois.edu (Chair)

- *The Agro-Environmental and Bioenergy Sustainability Policy Nexus: A Brazilian Case-Study*
Jody M. Endres, University of Illinois at Urbana-Champaign, jendres2@illinois.edu
- *Sociological and Economic Theoretical Underpinnings and Measurement Approaches to Green Job Policies*
David Peters, Iowa State University, dpeters@iastate.edu
- *Ecosystem Services and Bioenergy Production Landscapes*
Sam Evans, University of California-Berkeley, sgevens@berkeley.edu
- *Next Generation Mitigation: Regional Mitigation Planning for Utility Scale Solar Energy Development*
Nikki Springer, Yale School of Forestry & Environmental Studies, nikki.springer@yale.edu
- *The Role of Governance, Legitimacy, and Technological Innovation in Building Green Economy Metrics*
Michele Mastroeni, University of Edinburgh, mmastro1@exseed.ed.ac.uk
Jody M. Endres, jendres2@illinois.edu (Chair)

H-3 SCA Youth and Young Adults Leading Urban and Rural Sustainability

College Hall, Room 223

Presenters

- *SCA Green Cities Corps*
Miriam Parson, Student Conservation Association, Pittsburgh, mparson@thesca.org (Chair)
- *SCA Trail Town and River Town Outreach Corps*
Jeff Malik, Student Conservation Association, jmalik@thesca.org
- *SCA Community Programs for High School Aged Youth*
Josh Nard, Student Conservation Association Program, jnard@thesca.org

H-4 Cultivating Ecological Consciousness: Perspectives from Environmental Ethics and Epistemology

College Hall, Room 225

Zachary Piso, Michigan State University, pisozach@msu.edu (Chair)

- *Aquaponics in the Classroom: Cultivating an Ecological Consciousness through Sustainable Technologies*

Zachary Piso, Michigan State University, pisozach@msu.edu

- *The Moose in Our Campsite: The Role of Wild Animals in Conceptions of Wilderness*
Christina Leshko, Michigan State University, cleshko@gmail.com
- *Environmental Ethics, Enlightened Self Interest, and the City as Habitat*
Samantha Noll, Michigan State University, nollsama@msu.edu
- *Cities and Climate Change: Sovereignty, Epistemic Dissensus, and Ecologically Minded Adaptation*
Ian Werkheiser, Michigan State University, ianwerkheiser@gmail.com

H-5 Public Participation: A Closer Look

College Hall, Room 346

Presenters

- Alma Lowry, allowry@maxwell.syr.edu (Chair)
- *Public Participation and Implementation in Environmental Planning: Lessons Learned from Sustainability Plan Implementation*
Kirsten Kinzer, University of Pennsylvania, kkinzer@design.upenn.edu
- *Achieving Environmental Justice through Public Participation*
Alma Lowry, allowry@maxwell.syr.edu
- *Using Cognitive Response to Assess Shrimper Participation and Regulation Compliance in the Gulf of Mexico Shrimp Fishery*
Jolvan Terez Morris, jolvanterez@yahoo.com
- *Community Acceptance*
Maria A. Petrova, Tufts University, mariapandreeva@gmail.com

H-6 Visions of an Integrated Human/Nature Relationship or Change in Basic Assumptions

College Hall, Room 351

Presenters

- Stephanie Kaza, University of Vermont, skaza@uvm.edu (Chair)
- *Nulture: Recognising and Naming Locally-specific Human-environment Relationships*
Janet Stephenson, Centre for Sustainability, janet.stephenson@otago.ac.nz
- *The Pedagogy of Green Yoga: A Humanistic Approach for Environmental Sustainability*
Laura Henry-Stone, Lynchburg College, henrystone.l@lynchburg.edu
- *Rachel Carson's Environmental Ethics: A Sense of Beauty*
Stephanie Kaza, University of Vermont, skaza@uvm.edu

H-7 Environmental Justice: Indigenous Peoples and Local Peoples

College Hall, Room 447

Presenters

Kolson Schlosser, Slippery Rock University, kolson.schlosser@sru.edu
(Chair)

- *Scale, Power and Commodity Relationships: Implications for Doing Historical Political Ecology in Northern Canada*
Kolson Schlosser, Slippery Rock University, kolson.schlosser@sru.edu
- *Exploring Issues of Ecological Sustainability Within Indigenous Societies*
Kirk S. Lawrence, St. Joseph's College, klawrence@sjcny.edu
- *Impacts of Market Exposure and Path Dependency on Collective Risk Management: a Case Study of Land Use Conflicts in Bolivia*
Joanna Chan, University of Colorado, Boulder,
joanna.chan@colorado.edu
- *Overcoming the Complicated History of Urban-Rural Interactions in Appalachia to End Mountaintop Removal*
Lou Martin, lmartin3@chatham.edu

H-8 Exploring Environmental Issues through Literature and the Arts

College hall, Room 548

Presenters

Patricia Hackbarth, Independent Scholar, pathackbarth@earthlink.net
(Chair)

- *Scene Changes: Literature, Landsat, and the Lives of Landscapes*
Patricia Hackbarth, Independent Scholar,
pathackbarth@earthlink.net
- *A Century Later: A Multi-disciplinary Effort to Share the Lessons from the Extinction of the Passenger Pigeon (*Ectopistes migratorius*)*
David Blockstein, National Council for Science and the Environment,
David@NCSEonline.org; Joel Greenberg, Project Passenger Pigeon;
and Steve Sullivan, Peggy Notebaert Nature Museum
- *A Fishy History: Transplanting Habitats in the Nineteenth-Century*
Chase Pielak, Ashford University, chase.pielak@cgu.edu

H-9 The Lessons of the Aral Sea Disaster: A photographic journey through loss and sad beauty, Part 2 (presentations, photo exhibition, film)

Mellon Hall, Maurice Lecture Hall

Presenters

- *Aral Sea and Perspectives of Environment Sustainability in Central Asia*
Ambassador Dilyor Khakimov, Permanent Representative of
Uzbekistan to the United Nations, melaka69@gmail.com

- *Disaster by Design: Lessons of the Aral Sea for Sustainability*
Mike Edelstein, Ramapo College of New Jersey,
ecoedelstein@gmail.com

Closing Keynote Address and Lunch

12:30-2:00 p.m.

Mellon Hall, Maurice Lecture Hall

Wil Burns, AESS President-Elect

Closing Address by the Incoming AESS President

**Camille Pannu, Sustainable Economies Law Center,
Oakland, CA**

*Bridging Communities Through Environmental Practice:
Integrating the Urban and Rural*

Camille is an Equal Justice Works Fellow and Staff Attorney (sponsored by Hewlett-Packard and Morgan, Lewis & Bockius LLP) at the Sustainable Economies Law Center. Based in California's rural San Joaquin Valley, she partners with rural and farm worker communities to create community-driven and community-owned projects that improve health, build residents' power, and support sustainable local economic development. Prior to joining the Sustainable Economies Law Center, she co-coordinated the Center on Race, Poverty & the Environment's campaign for Green and Just Economic Development.

Raised in Richmond, California, Camille graduated from UC Berkeley School of Law (Boalt Hall), where she developed programs and university-community partnerships to address persistent environmental inequality in California's low-income communities of color. She has received recognition by the University of California, American Bar Association, California Bar, and minority bar associations, for her work with rural communities of color. In addition to her work with Valley communities, Camille serves on the boards of, and advises, several local and statewide community organizations focused on economic, environmental, and food justice

Session J

2:00-3:30 p.m.

J-I Linking Rural and Urban Societies through Sustainability Strategies and the Public Plate
College Hall, Room 220

Presenters

Jennifer Gaddis, Yale School of Forestry and Environmental Studies,
jennifer.gaddis@yale.edu (Chair)

- *Body Burden of the National School Lunch Program: Linking Children's Health, Worker Welfare, and the Ecology of the Food System*
Jennifer Gaddis, Yale School of Forestry and Environmental Studies,
jennifer.gaddis@yale.edu
- *Mending the Metabolic Rift Through Food: The Role of Urban Agriculture in Re-valuing Food Production and Preparation Among American Immigrants*
Amy Coplen, Portland State University, acoplen@pdx.edu
- *Building Regional Supply Chains: A Comparative Assessment of Food and Wood Products in the Pacific Northwest*
Jennifer H. Allen, Portland State University, jhallen@pdx.edu
- *Procurement for Sustainable Local Economic Development*
Laurie Kaye Nijaki, University of Michigan, ljake@umich.edu
- *Sustainability and Decline in Detroit: Sustainable Entrepreneurship in the Context of the Economic Development of Declining Urban Centers*
Laurie Kaye Nijaki, University of Michigan, ljake@umich.edu

J-2 Beyond the UNFCCC: Regional, National and Sub-National Market-Based Systems to Combat Climate Change

College Hall, Room 222

Presenters

- Wil Burns, Johns Hopkins University, wburns@jhu.edu (Chair)
- Kate O'Neill, University of California, Berkeley,
kmoneill@berkeley.edu
- *Climate Change and Marine Conservation regimes*
Howard Schiffman, New York University, howard.schiffman@nyu.edu
- *The European Union's Emissions Trading Scheme: Climate Model or Climate Muddle?*
Wil Burns, Johns Hopkins University, wburns@jhu.edu

J-3 The Psychology of Climate Change: Resources, Responses, and Critique of the Discourse

College Hall, Room 223

Presenters

- Jeff Sinn, Winthrop University, sinnj@winthrop.edu (Chair)
- *Can the Psychological Needs to Manage Threat and Uncertainty Explain Political Conservatives' Denial of Climate Change Science?*
Rose Njoroge, Florida State University, rnjoroger@fsu.edu
 - *Confronting and Harnessing Motivated and Ideologically-driven Responses to Climate Change*
Irina Feygina, New York University, irina.feygina@nyu.edu

- *The Role of Positive Emotions in Fostering Effective Responses to Climate Change*
David M. Carter, Center for Earth Leadership, dcarter@sas.upenn.edu
- *How Should Psychology Address Climate Change? Conflicting Visions of the Problem and the Solution*
Jeff Sinn, Winthrop University, sinnj@winthrop.edu

J-4 Integrating Geoscience into Sustainability through Scientific Research and Learning

College Hall, Room 225

Presenters

- David C. Gosselin, University of Nebraska-Lincoln, dgosselin2@unl.edu (Chair)
- *Integrating Glacial Geology, Soils, River Restoration, Climate Change, and Agriculture in Introductory Environmental Science*
Julie Maxson, Metropolitan State University, julie.maxson@metrostate.edu
 - *Interdisciplinary Teaching and Research at the University of Utah to Address Water Sustainability in the Mountain West*
Steven Burian, University of Utah, burian@eng.utah.edu
 - *How Would Geoscience and Geoscience Education Be Different in a Sustainable World?*
Tim Lutz, West Chester University, tlutz@wcupa.edu
 - *Linking Urban Air Quality to Health - Investigations across the Detroit-Windsor International Boundary*
Larry Lemke, Wayne State University, LDLeMke@wayne.edu

J-5 Trails, Trout, and Tourism: Recreational Values and "Wild" Spaces

College Hall, Room 346

Presenters

- John R. Harris, Franklin Pierce University, harrisjr@franklinpierce.edu (Chair)
- *"It's Like the City Dump": Considering Past and Present Rails-to-Trails Opposition*
Silas Chamberlin, sac206@lehigh.edu
 - *Retracing North With the Spring: Wild Lands Visitor Strategies*
John R. Harris, Franklin Pierce University, harrisjr@franklinpierce.edu
 - *The Happiest Place on Earth: The Value of Cultural Ecosystem Services in a Tourist Environment*
Jessica Racine Jacques, University of Central Florida,
jaltif@knights.ucf.edu
 - *Wilderness Trout and the Historical Split between Cities and their Hinterlands*
Jennifer Brown, jencorrinne@gmail.com

J-6 Operationalizing Stewardship for Land and Water Protection

College Hall, Room 351

Presenters

Tatyana B. Ruseva, Appalachian State University, rusevatb@appstate.edu (Chair)

- *Exploring the Relationship between Social Capital and Land Protection in Rural Areas*

Tatyana B. Ruseva, Appalachian State University, rusevatb@appstate.edu. Co-authors: James Farmer, Indiana University; and Charles Chancellor, Indiana University

- *Operationalizing Stewardship: Capturing Production-Oriented Landowner Perceptions of Stewardship Behaviors*
Paxton Ramsdell, Virginia Tech, pramsdel@vt.edu
- *Farmer Identity and Notions of Multifunctionality in Rotational Grazing Dairy Systems*
Rachel Brummel, Lafayette College, brummelr@lafayette.edu
- *Uncovering the Barriers to the Adoption of Sustainable Agriculture Practices under a Climate Change Scenario in NY State*
Carol Terracina Hartman, Journalism, Michigan State University, terracina.carol@gmail.com

J-7 ESS Pedagogy: Bridging between Urban and Rural Cultures

College Hall, Room 447

Presenters

Orin G. Gelderloos, University of Michigan-Dearborn, ogg@umd.umich.edu (Chair)

- *Bridging Rural-Urban Divides through Political Ecology and Critical Education for Sustainability in Urban Areas*
Nicolas Stahelin, Columbia University, nicolas.stahelin@gmail.com
- *Developing Student Engagement on Climate Change: The Use of Deliberative Polling to Engage Difficult Conversations about Climate Change*
Allyson M. Lowe, Carlow University, amlowe@carlow.edu; and Sandi DiMola, Chatham University, sdimola@chatham.edu
- *Using Place to Situate Educating Toward Sustainable Communities*
Brandn Green, bgreen@bucknell.edu
- *Think Global, Analyze Local Urban Municipalities as Class Project*
Orin G. Gelderloos, University of Michigan-Dearborn, ogg@umd.umich.edu

J-8 Energy Behaviors in the Built Environment

College Hall, Room 548

Presenters

Mary Beth Deline, Cornell University, med254@cornell.edu (Chair)

- *Making Every Student an Energy Auditor: Workshop for High School Teachers*
Michelle Homan, Gannon University, homan@gannon.edu.
Co-author: Karinna Vernaza
- *Bringing Worker Perspectives Into Energy Conservation*
Mary Beth Deline, Cornell University, med254@cornell.edu.
Co-author: Katherine McComas, Cornell University
- *Energy Efficiency and the Residential Sector: A Survey of Homebuyer Preferences for Housing Characteristics*
Constantine Hadjilambrinos, University of New Mexico, hadjilam@unm.edu; and Diane Thiel, University of New Mexico
- *The use of comparative feedback to influence workplace energy conservation*
Graham Dixon, Cornell University, gnd5@cornell.edu

J-9 Education for Sustainability

College Hall, Room 553

Presenters

Ashwani Vasishth, vasishth@ramapo.edu (Chair)

- *Teaching Sustainability As A Wicked Problem: Using Archetypal Mental Models to Attain Student Learning Outcomes*
Ashwani Vasishth, vasishth@ramapo.edu
- *Imagining the Impossible: Sustainability, Education, and the Wicked Problem of Language*
Kathryn Wayne, kate.wayne@www.edu
- *Education for Sustainability: Training the Next Generation of Experts to Confront Asymmetrical Power*
Jeff Howard, New York University, jhoward@nyu.edu
- *Education for Sustainability - Service-Learning as a Tool for Engaging "Wicked Problems"*
Jessa Madosky, Warren Wilson College, jmadlosky@warren-wilson.edu

Travel Snacks and End of Conference

3:30 p.m.

College Hall Lobby

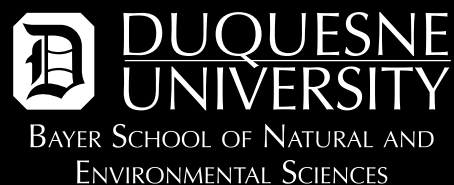
We're coming up.
FALL 2013

**Chatham University's new 388-acre
Eden Hall Campus is underway.**

Eden Hall Campus in Richland, Pa., will be the first in the world built from the ground up for the study of sustainable living, learning, and development. The latest in environmentally responsible technology, design, and innovation will help make Eden Hall self-sustaining in every way. It will strengthen Pittsburgh's leadership in green innovation and serve more than 1,500 students (online and on-campus) in the fields of sustainability, health sciences, business, and more. As the alma mater of environmental icon Rachel Carson and as an internationally recognized leader in sustainability, Chatham University is bringing big thinking to life at Eden Hall Campus, starting fall 2013.

Visit chatham.edu/edenhall for the latest information.

REDEFINING SCIENCE EDUCATION



When selecting a university, science students may think they only have two options—attending a small college with a strong focus on teaching or a large university that offers the excitement of innovative research. At Duquesne University's Bayer School of Natural and Environmental Sciences, you can experience both!

You will benefit from faculty who are passionate about teaching and mentoring students. Yet you will also have opportunities to participate in breakthrough research and gain hands-on experience with all the latest instrumentation. These opportunities give Duquesne students a dramatic advantage when competing with their peers for jobs or admission into top-level graduate programs.

BACHELOR'S DEGREES

Biochemistry
Biological Sciences
Chemistry
Environmental Chemistry
Environmental Science
Forensic Science and Law
Physics

MASTER'S DEGREES

Biological Sciences
Biotechnology
Chemistry
Environmental Science and
Management
Forensic Science and Law

GRADUATE CERTIFICATES

Environmental Science and
Management

DOCTORAL DEGREES

Biology
Chemistry



Celebrating more than 20 years of
advancing environmental science and
management through the Center for
Environmental Research and Education!

WWW.DUQ.EDU/SCIENCE
SCIENCE@DUQ.EDU | 412.396.4900





The Environmental Program at University of Vermont was established in 1972 as a campus-wide program serving students in four colleges across the university. We offer an interdisciplinary undergraduate major in Environmental Studies (ENVS), available to students in UVM's College of Arts and Sciences, College of Agriculture and Life Sciences, and the Rubenstein School of Environment and Natural Resources. We currently serve over 450 majors pursuing interests as diverse as environmental education, international development, sustainable agriculture, environmental law and policy, religion and ecology, ecopsychology, and landscape restoration. Students can minor in ENVS from any college or school within the university.

Drawing from many disciplines, from the arts and humanities to the social, basic and applied sciences, the Program provides students with an interdisciplinary liberal education, drawing upon the resources of the campus as well as local and global communities. We encourage community engagement through internships and service learning and we support student activism and political awareness. The Environmental Program community is a lively hub of activity, addressing local and global issues with equal concern. We believe in collaborative problem-solving and the power of human imagination to create a more sustainable future. We intend our Program to be a beacon of hope amidst the very challenging environmental dilemmas that face humanity.

ENVS Concentrations

- Ecology and Conservation
- Food, Land and Community
- Environmental Policy and Development
- Nature, Culture and Justice
- Sustainability Studies
- Environment and Health
- Individual Design

Senior Capstone Options

- Thesis/Project/Creative Arts Project
- Internship
- Advanced Courses

"I chose to be an ENVS major because I want to make a difference in our world, to help bring about positive change in our communities for the environment and society." ~ Seth Levin, 2011

"Everything I have accomplished during my UVM years involved the skills I gained in environmental studies courses. I have pursued much more than I ever expected. My courses inspired me to take my own action and change my lifestyle to better fit my environmental ethics." ~ Jessica Fefer, 2011

"After graduation I am certain my ENVS degree will serve me in my career, but more importantly in my conscience; it is the foundation with which I now make decisions." ~ Naani Sheva, 2011

Contact us:

Environmental Program, Bittersweet House, 153 South Prospect St., Burlington, VT 05401

Email egetchel@uvm.edu, **Phone:** (802) 656-4055, **Website:** www.uvm.edu/~envprog

M.A. in Bioethics

The NYU master's program promotes a broad conception of Bioethics encompassing both environmental ethics and medical ethics. Key features that set our program apart from others:

- Option of 2 Tracks—Environment Track or Health Track
- Unique, one-on-one student advising and small class sizes
- Critical analysis of pressing issues such as population and climate ethics, healthcare justice, and the ethics of agriculture and food production
- Culminates with a practicum in environmental or health organization

Rolling admissions. Apply now!

www.bioethics.as.nyu.edu



NEW YORK UNIVERSITY

The Hassenzahl Family
celebrates the
continued success
of AESS,
and welcomes
its members
to Pittsburgh!

MASTER OF ARTS IN ENVIRONMENTAL RESOURCE POLICY

- Are you passionate about environmental policy?
- Need the tools to turn your passion into results?

Apply to GW's Environmental Resource Policy Program.

HIGHLIGHTS:

- Multi-disciplinary perspective that integrates science, economics, law, and public policy
- Located in Washington, D.C.—the hub of environmental policy
- Internship opportunities in government agencies, NGOs, and private sector
- Customized curriculum, flexible class schedule for working students
- Spring and fall admission

THE GEORGE
WASHINGTON
UNIVERSITY
WASHINGTON, DC

Learn more at
<http://columbian.gwu.edu/enrp>

John Wiley and Sons, Inc. at AESS '13

Visualizing Environmental Science, 4e by
Berg/Hassenzahl/Hager *Fall '13*

**Environmental Science: Earth as a Living
Planet**, 9e by Botkin/Keller *Fall '13*

Environment, 8e by Raven/Hassenzahl/Berg

Essential Environmental Science, 1e by
Keller/Botkin

**Environmental Science: Active Learning
Laboratories and Applied Problem Sets**, 2e by
Wagner/Sanford

WILEY

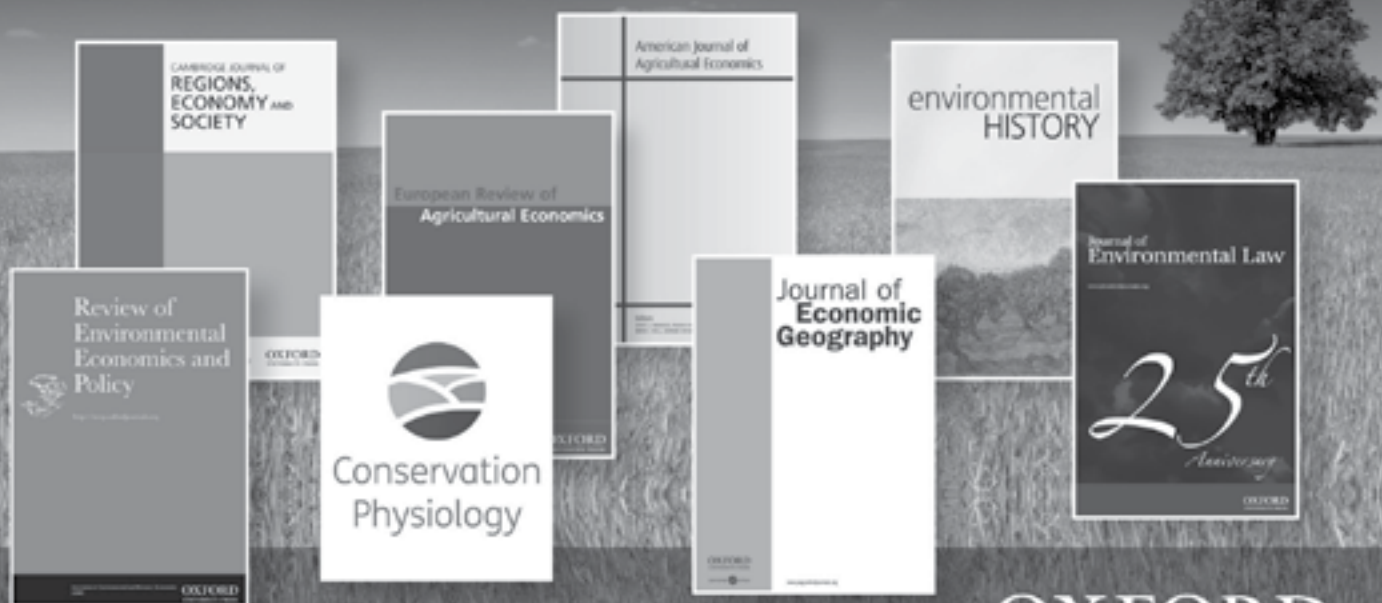


master of sustainability
answer big questions

From water resource management to the business of sustainability, the sustainability program explores real-world challenges from an interdisciplinary perspective to produce world-changing solutions that achieve the greatest environmental, economic, and societal outcome for all. For more, visit chatham.edu/msus.

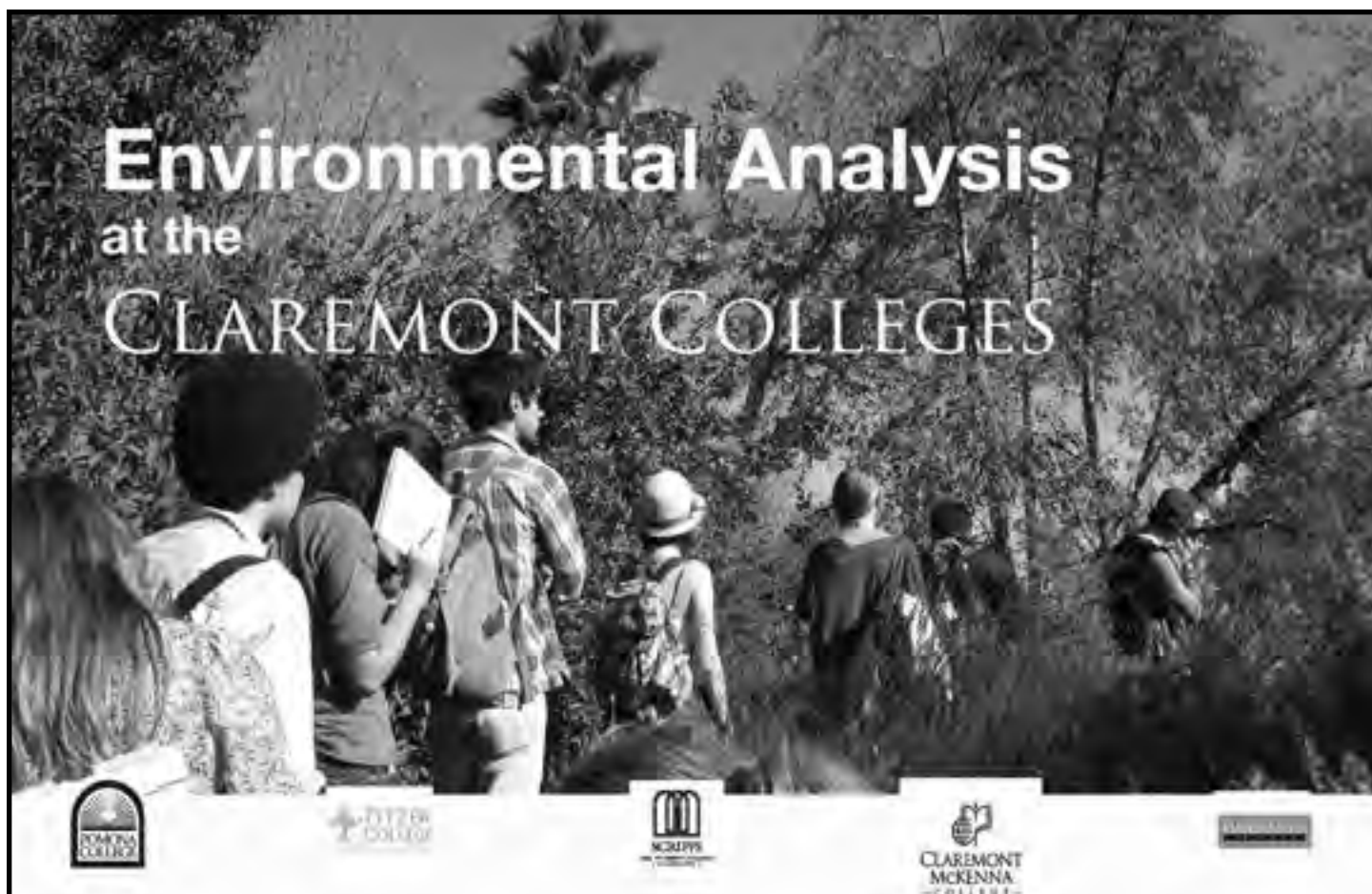
chatham UNIVERSITY
SCHOOL OF SUSTAINABILITY
AND THE ENVIRONMENT

Agricultural and Environmental Journals from Oxford



find out more www.oxfordjournals.org

OXFORD
UNIVERSITY PRESS



Chemistry of the Environment, Third Edition

Thomas G. Spiro, Kathleen Purvis-Roberts, William M. Stigliani

“This comprehensive new edition is well written and balanced...Summing up: Recommended for all undergraduate students and general readers.”

—Choice, May 2012

“Spiro, Purvis-Roberts and Stigliani write in a clear and engaging style. They organize the material in a logical and compelling manner, emphasizing the many cross-connections among environmental topics. The bottom line is that this is the environmental chemistry book that we have all been waiting for!”

—From Foreword by Harry Gray, California Institute of Technology

“I very much congratulate the authors. This is by far the best environmental chemistry text that I have read.”

—Professor John Perona, University of California at Santa Barbara

ISBN: 978-1-891389-70-2, 555 pages, cloth, \$92.50

Contact us for an exam copy!

University Science Books • www.uscibooks.com



W. W. NORTON & COMPANY
INDEPENDENT AND EMPLOYEE-OWNED



- ♦ 978-0-393-93072-6
- ♦ 432 PAGES
- ♦ PAPERBACK

AVAILABLE NOW!

HUMANS IN THE LANDSCAPE

AN INTRODUCTION TO ENVIRONMENTAL STUDIES

KAI N. LEE, *The Packard Foundation and Williams College [emeritus]*

WILLIAM R. FREUDENBURG, *late of University of California, Santa Barbara*

RICHARD B. HOWARTH, *Dartmouth College*

THE FIRST TRUE SYNTHESIS FOR ENVIRONMENTAL STUDIES

- ♦ *Humans in the Landscape* is the first undergraduate introductory text to fully synthesize all key disciplines of environmental studies.
- ♦ *Humans in the Landscape* tells a coherent story about our relationship to the environment over time.
- ♦ Eloquentlly written, *Humans in the Landscape* invites students into the conversation.

"Humans in the Landscape does a masterful job of creating a coherent framework for thinking about the basic nature of today's pressing environmental problems, and its contention that all environmental problems are the result of a mismatch between human institutions and ecological systems is a productive and challenging way to get students thinking about causes, consequences, and potential solutions. The text as a whole is fantastic: clearly written, well-organized, and chockful of the greater insights to have emerged from the field of Environmental Studies."

—CHRISTOPHER WELLS, *Macalester College*

(800)233-4830 ■ WWW.NORTON.COM



URSINUS
COLLEGE

Ursinus College
is proud to be
a sponsor of
the AESS 2013
Conference

www.ursinus.edu

601 E. Main Street
Collegeville, PA 19426
610-409-3000

We are here at AESS.
Please find our table!

New DVD Releases - Linking Rural/Urban Societies/Ecologies



A FIERCE GREEN FIRE The documentary of record on the environmental movement

DETROPIA A post-industrial city struggles with the consequences of the broken economy

WE ARE NOT GHOSTS Detroiters reinventing a self-sustaining, human-scaled city

SHIFT CHANGE Employee-owned businesses provide secure, dignified jobs in democratic workplaces

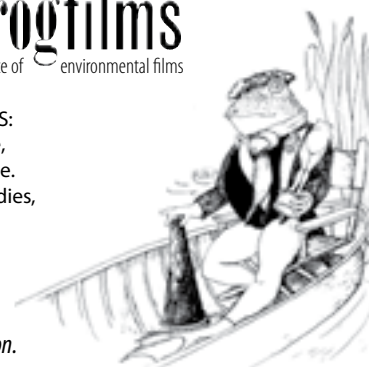
BITTER SEEDS GMOs' impact on India's farmers

bullfrogfilms
The leading source of environmental films

On our website, See SUBJECTS:
sustainability, climate change,
ecology, environmental justice,
biology, urban & regional studies,
food, water, energy, oceans
design, green building,
sustainable agriculture,
globalization...

Free previews for purchase evaluation.

www.bullfrogfilms.com



The Center of American Energy Pittsburgh, Pa.

Natural resources ... 150 years of
energy innovation ... unique strengths
across seven traditional and renewable
energy industries.

That's Energy to the Power of Pittsburgh.



Lawrence

Butler

Armstrong

Indiana

Beaver



Allegheny

Pittsburgh

Westmoreland

Washington

Greene

Greene

PENNSY

The Pittsburgh region is:

**Advancing energy security through innovation at 800
companies and investment of \$1 billion in R&D annually.**

**Investing in the future of manufacturing thanks to plentiful
natural gas supplies, including Marcellus Shale wet gas.**

**Building tomorrow's workforce to fill thousands of new
energy-related jobs.**

Learn more at PittsburghRegion.org.



Innovation Works





The Association for Environmental Studies and Sciences (AESS) was created in 2008 to provide professional identity, collective voice, and continuing education for academics in environmental fields of study. The first environmental Studies and Sciences (ESS) programs in the 1970s and earlier aimed to open doors between disciplines to encourage discoveries about the interdependencies of Earth and humanity that could not be made otherwise. Today this community consists of thousands of faculty members from diverse backgrounds associated with the nearly 1,500 ESS programs and departments in American high education.

AESS encourages excellence in research, teaching, and practice in environmental studies and sciences. It assists members in discovering like-minded colleagues at other campuses. It also facilitates encounters with other colleagues who hold different viewpoints and professional orientations. Enlarging and strengthening the community of scholars and scientists with whom we interact is arguably the most important benefit the Association offers.

AESS serves these important purposes:

- enlarging our capacity for cross-campus collaboration, mentoring, and shared scholarship;
- creating a collegial process for speaking, networking, publishing, and conference development;
- developing professional and accreditation standards;
- supporting the career development of members, especially junior faculty;
- providing professional advice on important matters of environmental policy and management.

Environmental scholars and scientists inevitably discover that the challenges we face transcend the disciplinary fields in which many of us practice. They require humility about what we know and don't know, both as individuals and as representatives of disciplines. We believe that it is only through learning communities of the type we hope to foster at AESS that we can achieve "whole system" environmental education and creative synthesis of knowledge that promotes a healthier Earth.

The annual business meeting at this conference is a great way for AESS members to get involved in the strategic planning of the organization. It's an opportunity to meet and collaborate with the AESS Board of Directors to discuss current and future initiatives. What new directions would you like to see AESS consider, and how can we help make AESS work better for you? Everyone is welcome, and refreshments will be provided.

And finally, we welcome you to help us meet our goals by becoming AESS members and conference sponsors!

Association for Environmental Studies and Sciences

1101 17th Street, NW Suite #250

Washington, DC 20036

Phone 202.207.0014

Fax 202.628 4311

Email lbirkey@ncseonline.org

www.aess.info

PRESENTER INDEX

- | | | | |
|-----------------------------|----------------------------|---|--------------------------------|
| Adkins, Sasha 19 | Carter, David M. 33 | Duram, Leslie A. 18 | Hackbarth, Patricia 32 |
| Allen, Jennifer H. 33 | Carvill, Sarah 29 | Dutcher, Tricia 16, 26 | Hadjilambrinos, Constantine 34 |
| Allison, Elizabeth 24 | Cerny, Astrid 30 | Edelstein, Mike 30, 32 | Hagood, Amanda 18 |
| Allison, Juliann Emmons 30 | Chamberlin, Silas 33 | Eflin, James 29 | Harpanka, Kshama 19 |
| Aloi, M. Joseph 20 | Chan, Joanna 32 | Elders, Molly 18 | Harris, John R. 33 |
| Arturo, Ian Aziz 22 | Clark, Susan 30 | Endres, Jody M. 31 | Hartman, Carol Terracina 34 |
| Atalan-Helicke, Nurcan 16 | Clarke, Chris 16 | Englander, John 12 | Hassenzahl, David 13, 30 |
| Bacon, Christopher 17 | Collins, Mary 21 | Estiva, Jude 17, 22, 23 | Hatch, Nina 25 |
| Bailis, Robert 22, 24 | Collins, Terry 20 | Evans, Sam 31 | Henry-Stone, Laura 31 |
| Baka, Jenn 23 | Cook, Jeff 31 | Evensen, Darrick T. 16 | Hill, Stephen 16, 21 |
| Barnhart, Shaunna 22, 24 | Cooper, Sara 24 | Fairman, Lesley 16 | Hoderlein, Samantha 16 |
| Beck, Elisa 20 | Coplen, Amy 33 | Fast, Stewart 16 | Holmes, Christina 21 |
| Beer, Tanja 16 | Curtis, Kip 18, 23 | Ferrence, Matthew 29 | Homan, Michelle 34 |
| Berg, John C. 30 | Cutts, Bethany 26, 29 | Feygina, Irina 33 | Howard, Greg 17, 18, 19 |
| Berger, Karen 15 | Czech, Marya 21 | Finewood, Michael 20, 25 | Howard, Jeff 30, 34 |
| Blockstein, David 13, 32 | Dale, Virginia 22 | Fry, Julianne 24 | Huggins, Julia 19 |
| Bocking, Stephen 21 | Danielson, Antje M. F. 12 | Gaddis, Jennifer 33 | Hwang, Robert 25 |
| Bomberger, Ann 25 | Darby, Kate 22, 29 | Gallagher-Ernst, Anne 16 | Irwin, Michael 29 |
| Bonnstetter, Ron 24 | Darkwa, Sarah 17, 23 | Gelderloos, Orin G. 34 | Jacques, Jessica Racine 33 |
| Boudet, Hilary 16 | Dawson, Rebecca Smullin 18 | Gervich, Curt 19, 29 | Jacques, Peter 17 |
| Bouvier-Brown, Nicole C. 24 | Delavan, Will 29 | Goldoftas, Barbara 17, 19 | Jacquet, Jeffrey 16 |
| Bozzi, Laura 29 | Deline, Mary Beth 34 | Gosselin, David C. 24, 33 | Jalbert, Kirk 20 |
| Brooks, Andrew 20 | DeMarco, Patricia M. 20 | Graffy, Elisabeth 24 | Jelacic, Matthew 30 |
| Brown, Jennifer 33 | DePaoli, Lisa C. 18 | Green, Brandn 34 | Jorgensen, Andrew 13 |
| Brummel, Rachel 34 | DiMola, Sandi 34 | Greenberg, Joel 32 | Kane, Sally 12 |
| Bugden, Dylan 16 | DiRosa, Samantha 30 | Gross, Deborah 24 | Kaza, Stephanie 19, 23, 31 |
| Burian, Steve 33 | Dixon, Graham 34 | Guidotti, Tee 12 | Keeley, Melissa 30 |
| Burns, Wil 13, 33 | Dodson, Robin 11 | Gupta, Divya 17 | Kennard, Emily 28 |
| Cardenas, Soraya 16, 17 | Duffy, Bob 30 | Guzman, Maria Aileen Leah G. 17, 22, 23 | Khakimov, Dilyor 32 |
| Carletta, Mary Anne 19 | Duggan, John W. 24 | | Kimball, Kevin 29 |



springer.com



Journal of Environmental Studies and Sciences Proudly published by Springer

Thank you to the AESS community for your continued support!

015226a

Kinzer, Kirsten 31	Mehalik, Matthew 20	Reeve, Jennifer R. 18	Sullivan, Steve 32
Klein, Yehuda L. 19	Mehler, Michael 16	Reynolds, Travis 17, 25	Thaxton, Chris 24
Klyza, Christopher McGrory 29	Mehling, Molly 18, 20, 26	Rich, Nancy 17	Thomas, Brian 23
Koontz, Tom 23	Mickey, Sam 24	Richmond, Martha 17	Todd, Claire 10
Kransteuber, Katherine 19	Miga, Tony 30	Rinfret, Sara R. 30	Utsler, David 20
Kriesky, Jill 20	Montebianco, Adelle 21	Robinett, Rush 22	Vasishth, Ashwani 34
Lall, Ramona 30	Mooney, Susan M. 19	Rodgers, Vikki L. 19	Vatovec, Christine 11, 17, 18, 19
Lamers, Vanessa 29	Morgan, Sarah 22	Rodriguez, Heather R. 18, 21	Vedachalam, Sridhar 19
Lange, Deborah 25	Morris, Jolvan Terez 31	Rogers, Peter 19	Vidra, Rebecca 19
Lawrence, Kirk S. 32	Mudliar, Pranietha 25	Rosenbaum, Walter (Tony) 10	Vincent, Shirley 15, 24
Lemke, Larry 33	Mumford, Karen 29	Ruotolo, Andrea 25	Wade, Shannon 16
Leshko, Christina 31	Nard, Josh 31	Ruseva, Tatyana B. 34	Waggett, Caryl 17, 19, 22
LeVasseur, Todd 23	Neff, Mark 29	Saul, Kathleen M. 25	Wallace, Lisa 21
Lin, Ju-Pong 17	Nijaki, Laurie Kaye 33	Schiffman, Howard 33	Wallace, Richard L. 17
Lin, Tze-luen 23	Njoroge, Rose 33	Schombert, Sara 22	Walton, Abigail Abrash 16
Lindquist, Maxwell 16	Noll, Samantha 31	Schlosser, Kolson 32	Warren, Karin 15, 16, 18
Link, Hildegard 19	O'Connor, Megan 25	Schlottmann, Chris 23	Watts, Richard 23
Litfin, Karen 24, 30	O'Neill, Kate 33	Schmitt-Harsh, Mikaela 19	Wayne, Kathryn 34
Losco, Russell 19	Olson, Elizabeth A. 16	Schneider, Daniel 16	Wegner, Susan 30
Lowe, Allyson M. 34	Onorati, Jennifer 20	Schwartz, John 22	Weinberg, Glenn 22
Lowry, Alma 31	Pallant, Eric 16	Scott, Justin 22	Wekerle, Gerda R. 21
Luce, Shelley L. 18	Parrell, Rod 13	Scruggs, Caroline 18, 22	Wells, Lindley 25
Lutz, Tim 33	Parson, Miriam 31	Segarra, Monique 22, 23	Werkheiser, Ian 31
Lyon, Jonathon 16	Pautz, Michelle 31	Sethi, Gautham 23	Whitney, Angela 17
MacBride, Samantha 24	Pawlitschek, Jennifer Joy 11, 15	Singh, Ajay 18, 29	Whitney, Mary 30
Madosky, Jessa 34	Peters, David 31	Sinn, Jeff 33	Wilkening, Ken 20, 22
Malan, Leon-C 16	Peterson, Richard 24	Slater, John 12	Wilson, Mike 19, 30
Malik, Jeff 31	Petrova, Maria A. 31	Smith, Dyanna I. 25	Wilson, Robyn 18, 23
Maltz, Alesia 17	Petry, Julie 28	Smith, Kim 10, 18	Wolfson, Jane 18
Markham, William 20, 22	Phadke, Roopali 16	Sommerfield, Stacey 18	Yeboah, Felix K. 23
Marten, Gerry 17, 23, 29	Phillipson-Mower, Teddie 23	Springer, Nikki 31	Zimring, Carl 24
Martin, Lou 32	Piacentini, Richard 20	Stahelin, Nicolas 34	Zwickle, Adam 18
Mastroeni, Michele 25, 31	Pielak, Chase 32	Stave, Krystina 23	
Mattson, David 30	Piso, Zachary 31	Stein, Ninian 25	
Maxson, Julie 33	Poole, Alexandria 20	Steinhoff, Gordon 18	
Mbatu, Richard 25	Pritchard, Henderson W. 19	Stephenson, Janet 30, 31	
McDonald, Bryan 17	Purvis-Roberts, Kathleen 17, 24	Stough-Hunter, Anjel 21	
McErlean, Jennifer 30	Rabbi, Mohammed F. 17	Straub, Crista L. 21	
McKenney, Rose 10	Ramsdell, Paxton 34	Stroup, Laura J. 21	

Oregon Seascape

I watched sea-rock cliffs coalesce with pine needles, photogenic silhouettes casting damp shadows on the tidal sweep... the noonday sun lingered into a dull monotony disturbing early morning wash on the pebbled beach. Windblown trees look calm now, un-beset by winter shears, having arrived as marbled driftwood to dazzle the caustic eye – which earlier poured over dry-leaf pages, symbols, notations, squiggles of dull abstractions – as the awakened seascape blew upon the coastline and softly took my withheld breath away...

Karim Ahmed, 2010

Notes

AESS @ Duquesne Notes

ATM

ATMs are located on the 2nd floor of the Duquesne Union and on the Forbes level of the Power Center for your convenience.

Breakfast & Lunch Locations

Breakfast and lunch are served in the Options Café, located on the 5th Floor of the Duquesne Union. All conference guests must present their ID card to the cashier.

DuqNET Guest Wireless

Please use the DuqNet Guest account. Upon opening an internet browser you will be prompted to enter a username and password.

Access the internet with the below username and password:

Username: CSduq

Password: Summer2013

For Troubleshooting & Assistance: Monday–Friday, 7am–5pm: 412.396.HELP or visit the Help Desk located on the 2nd Floor Duquesne Union.

Duquesne University ID Card

All participants will be issued an ID Card. Guests residing on campus must swipe their ID Card to enter Vickroy Hall. All guests eating breakfast and lunch will be required to show the cashier in the Options Café.

Eateries & Coffee

Barnes & Noble Bookstore & Café

Power Center - Forbes Avenue

Monday - Thursday

8:00am–7:00pm

Friday & Saturday

8:00am–5:00pm Friday / 9:00am–5:00pm Saturday

Starbucks

2nd Floor, Duquesne Union Building

Monday - Friday

7:30am–5:00pm

Saturday

7:30am–1:30pm

Red Ring Restaurant

Power Center - Forbes Avenue

Monday - Friday

11:00am–2:00pm

Jamba Juice

Power Center – Forbes Avenue

Monday - Friday

11:00am–2:00pm

Parking

Daily Guest Parking: Parking is available in the Forbes Garage for all conference guests on a cash basis. The daily parking rate is \$12.00 per vehicle. Vehicles entering the parking garage after 5pm will be charged a \$6.00 evening rate. Cash payment is required upon exiting the parking garage. Guests must pay each time they exit the garage. Duquesne University and the Conference Services Department are not held responsible for any parking citations incurred during the conference.

Parking Permits: Conference guests who have requested a parking permit will receive their permits at registration. Parking permits are valid in the Forbes Avenue Garage. Permit holders are required to pull a blue parking ticket at the entrance of the Forbes Avenue Garage. Upon exiting, please surrender the blue ticket and show the parking attendant the permit. Guests will be able to enter and exit the garage unlimited times throughout their stay. Unused portions of the permit will not be refunded. Duquesne University and the Conference Services Department are not held responsible for any parking citations incurred during the conference. ATM

Important Contact Information

Conference Coordinator

Megan Peterson

Room 326 Duquesne Union

412.396.1175 (office)

calvinm@duq.edu

Office of Residence Life

Assumption Hall

412.396.6655

Vickroy Hall Front Desk

412.396.4212

Dining Services

Room 331 Duquesne Union

412.396.6612

Computing and Technology Services

Duquesne Union, 2nd Floor

412.396.4357(HELP)

Public Safety

Emergency: 412.396.2677(COPS)

Non-Emergency: 412.396.6002



Linking Rural & Urban Societies & Ecologies

Chatham University and Duquesne University, Pittsburgh, PA June 19-22, 2013

